

FLOG/FIM Meeting Agenda, 2 May 2025

1. Update from the National Water Center (Derek Giardino)
2. Updates from federal and state agencies in Texas
3. Featured presentation from Texas General Land Office: [River Basin Flood Study \(RBFS\) Update and TDIS Data and Models Query Tool \(DMQT\) Demo](#)
4. Further Discussion



Texas General Land Office

River Basin Flood Study (RBFS) Update & TDIS DMQT Demo

RBFS Study Goal



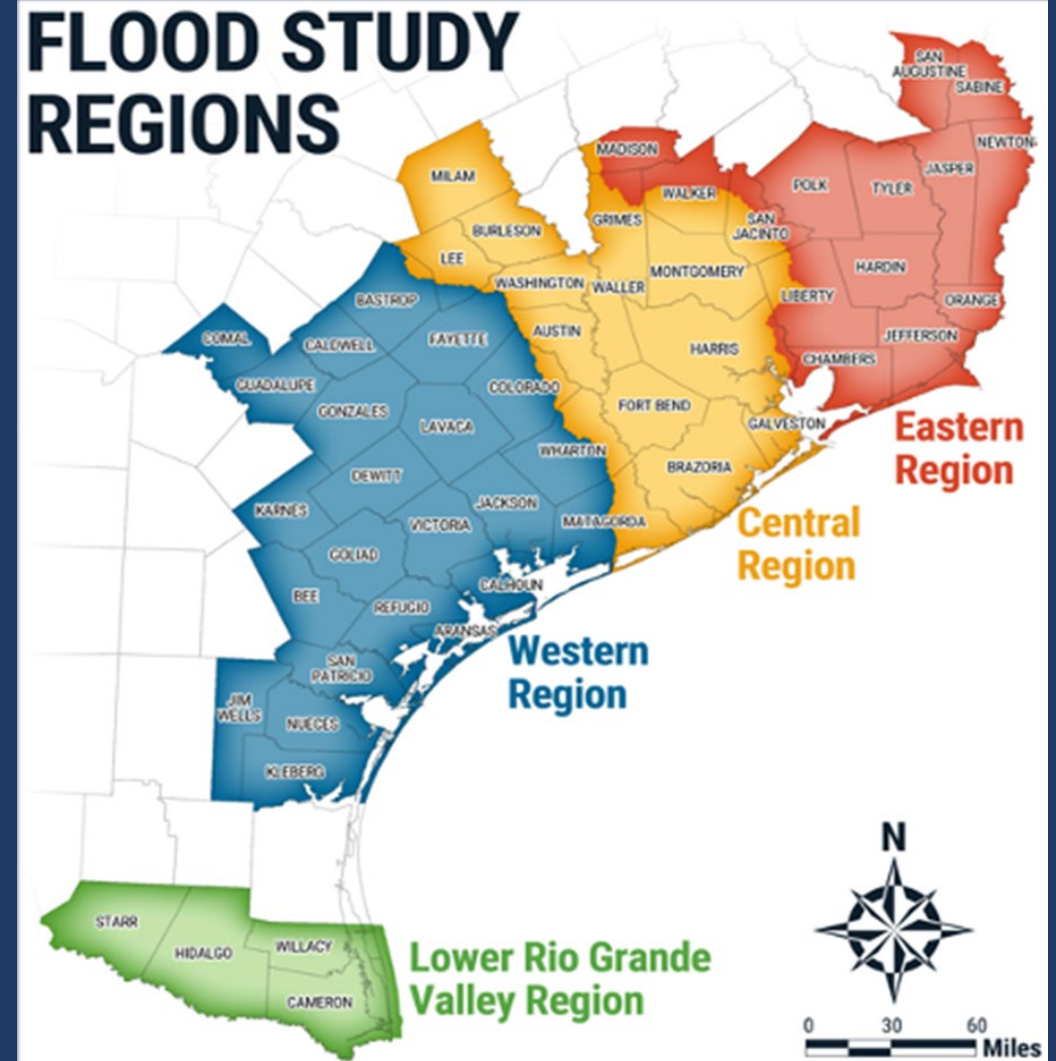
Accurately model and evaluate flood risks within the study area



Assist communities in developing cost-effective flood mitigation strategies



Determine potential funding sources for mitigation projects



Strategic Framework



Hydraulic & Hydrologic Models



Model
Type



Flood
Types



Review

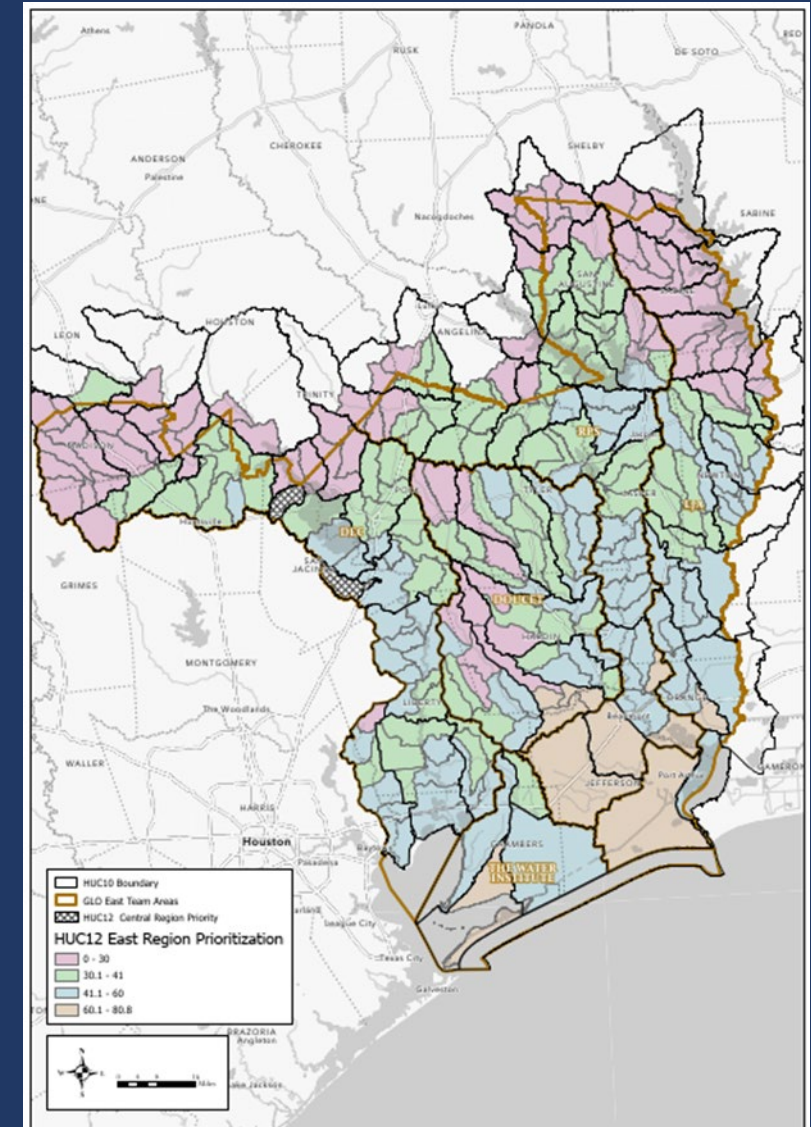
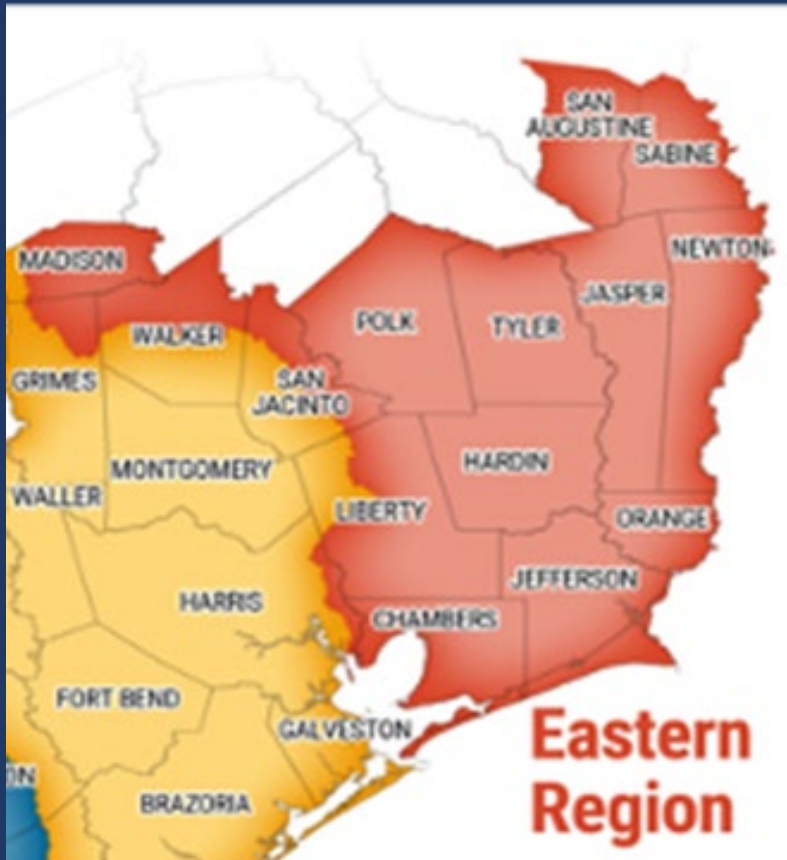


Level of
Detail



Tiers

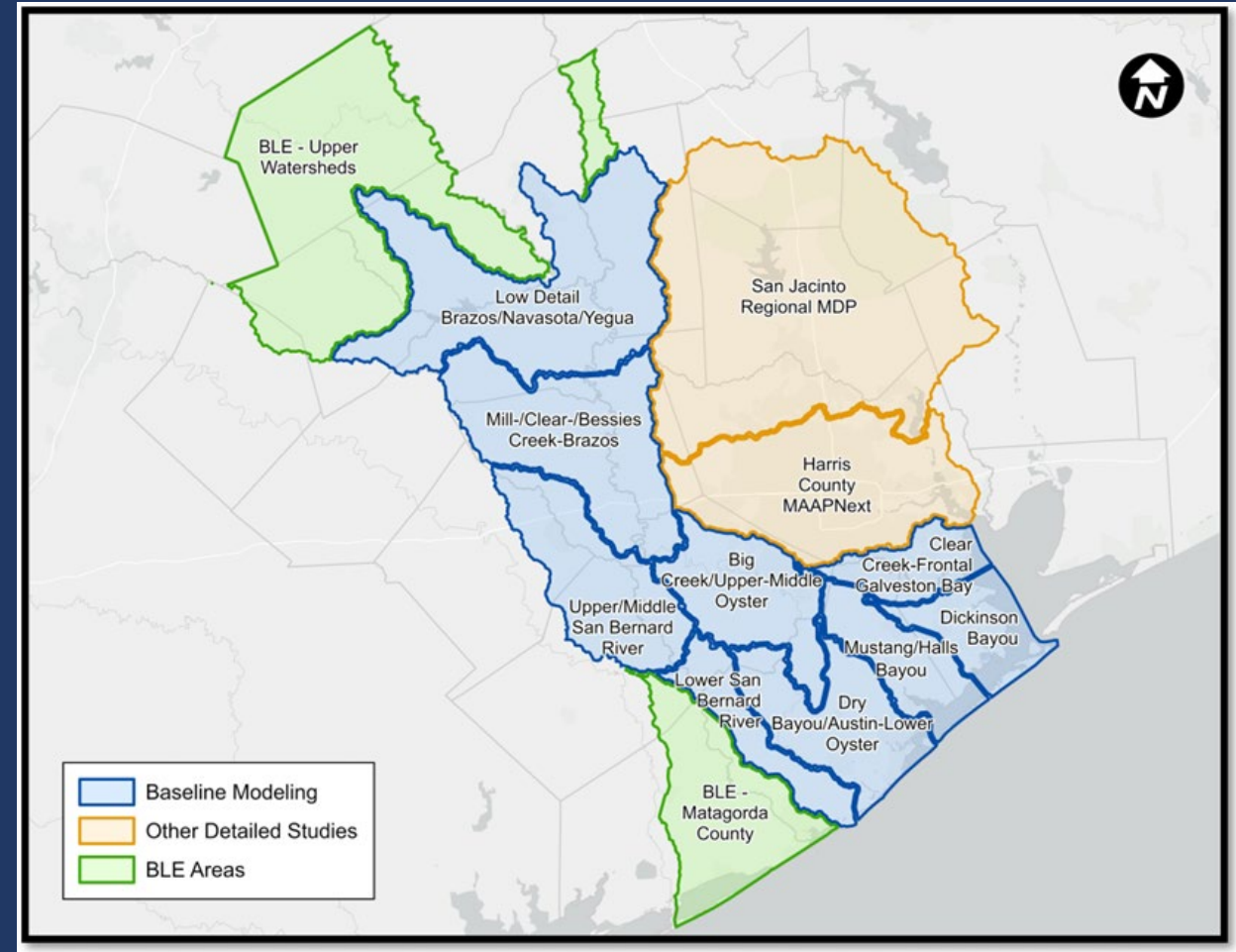
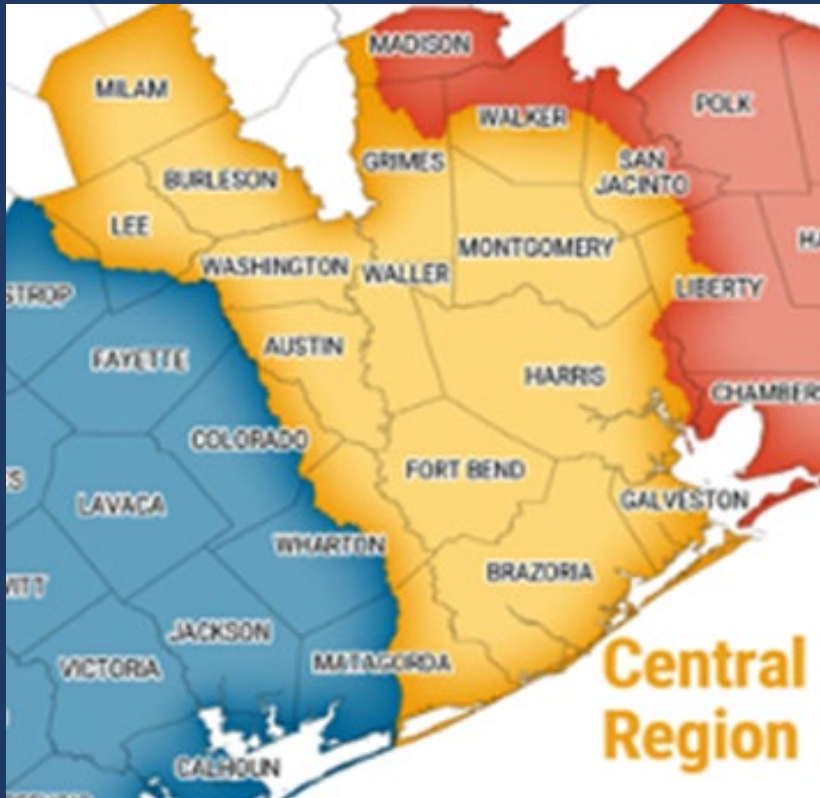
East Region



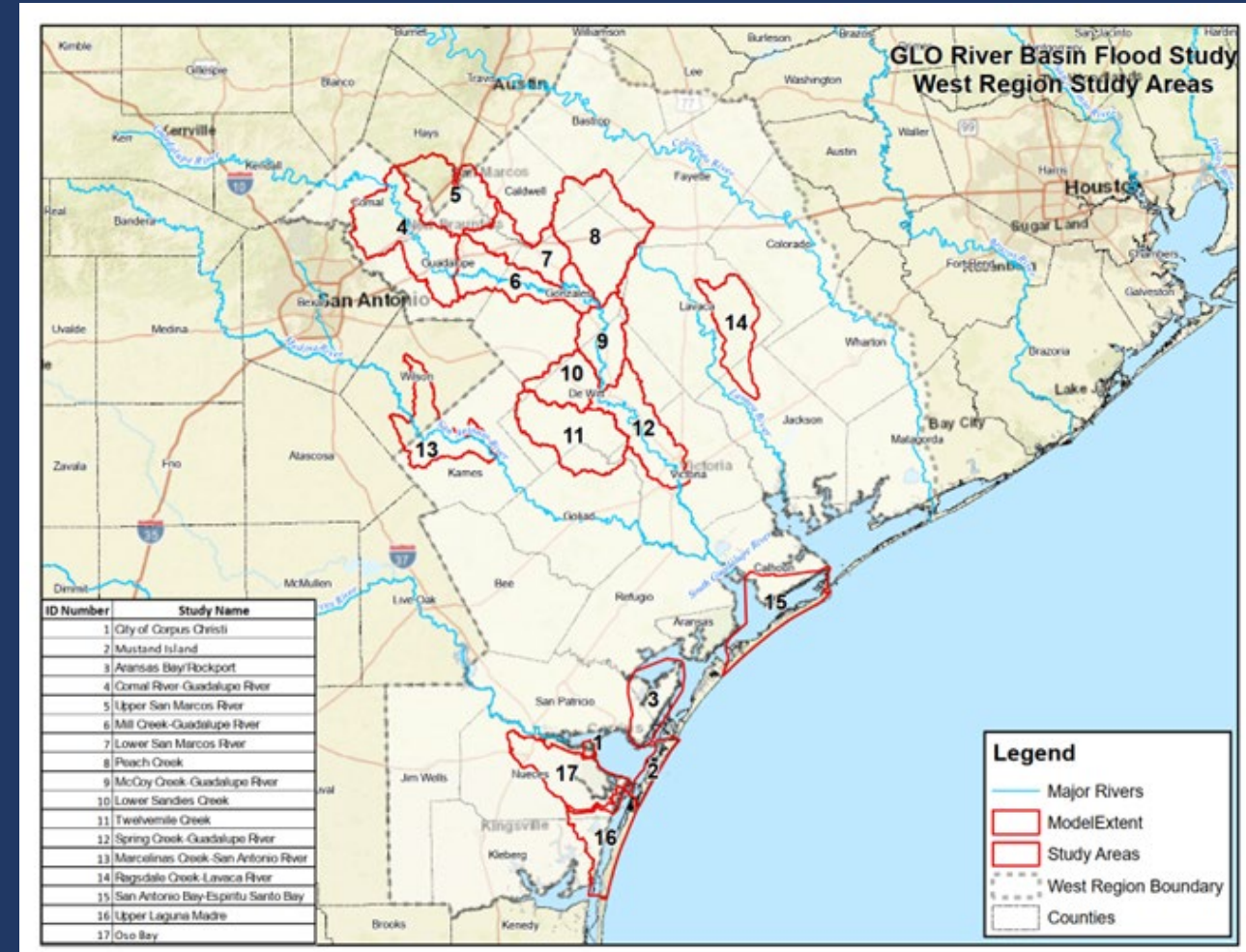
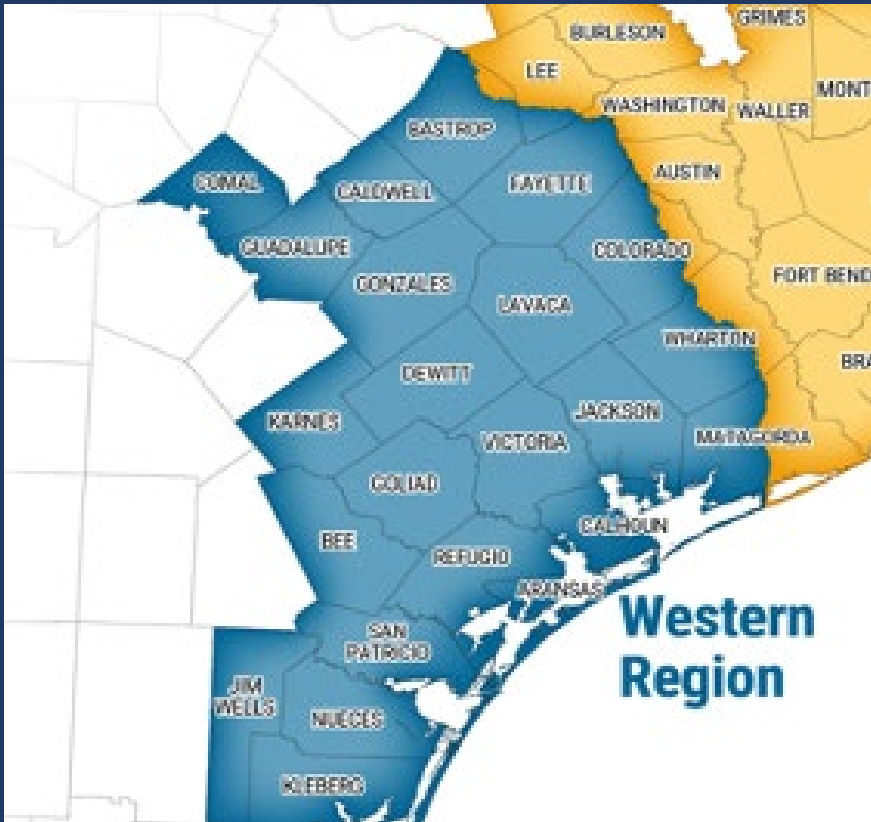
Texas General Land Office
Commissioner Dawn Buckingham, M.D.



Central Region



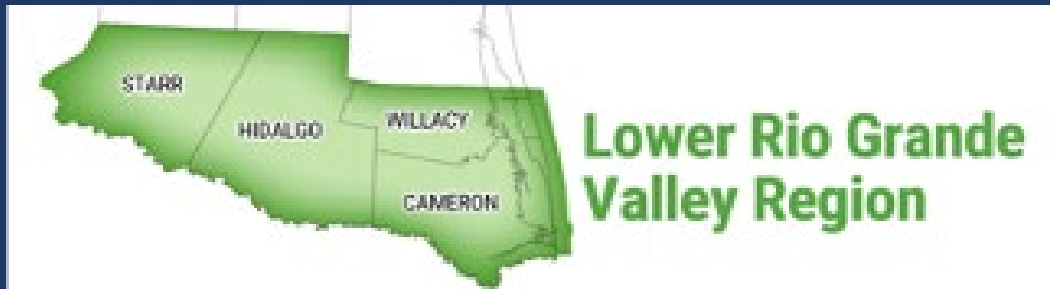
West Region



Texas General Land Office
Commissioner Dawn Buckingham, M.D.



LRGV Region

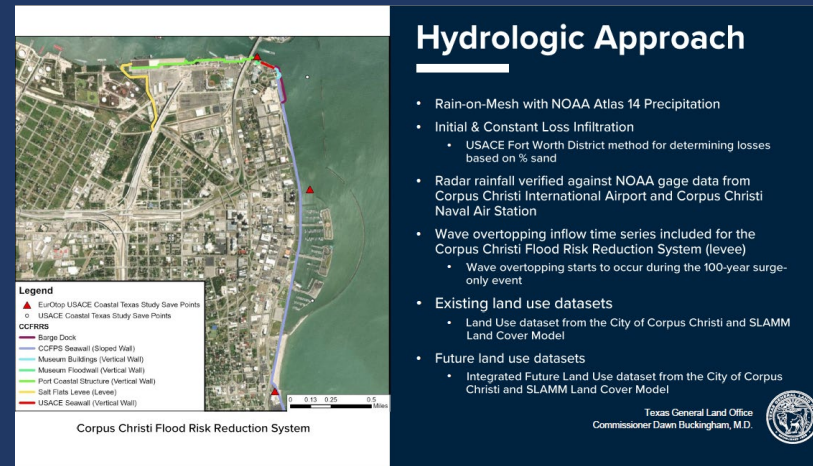


Texas General Land Office
Commissioner Dawn Buckingham, M.D.



RBFS Model Availability

- 47/75 Baseline Models Complete
- 17 available in DMQT
- All available by end of June



DOWNTOWN CORPUS CHRISTI (HUC10:1211020202) 100% MODELING REPORT

The enclosed hydrologic and hydraulic models, final report, and GIS data were developed for the Texas General Land Office (GLO) for its Regional River Basin Flood Study project. The purpose of these models, final report, and associated GIS data is to better understand existing conditions for the GLO study. These products should not be used for construction or bidding purposes. For areas where FEMA effective FIRM maps do not include regulatory flood zones, or where Zone A is depicted, these maps could be considered best available data at the discretion of the local floodplain administrator. Enclosed models, reports, and GIS data may require additional effort to support a FEMA map update. The Texas General Land Office and AECOM make no representations or warranties regarding the accuracy or completeness of the information provided in the enclosed documents or the data from which they were produced. No representations or warranties are made regarding the utility of any of the data or data representations for purposes other than those stated above. Not for use beyond those included in and specific to the scope of the RBFS project.

Study Area Designation: Downtown Corpus Christi
Vendor/Region: AECOM / West Region
Model Completion Date: 01/27/2025
Hydrologic Model: Downtown Corpus Christi - HEC-HMS version 4.1.0
Hydraulic Model: Downtown Corpus Christi - HEC-RAS version 5.4.1
Horizontal Datum: North American Datum 1983 (NAD83)
Vertical Datum: North American Vertical Datum 1988 (NAVD88)
Projection: Texas Coordinate System
Linear Units: U.S. Feet (Horizontal and Vertical)



RIVER
BASIN
FLOOD
STUDY
WESTERN
REGION



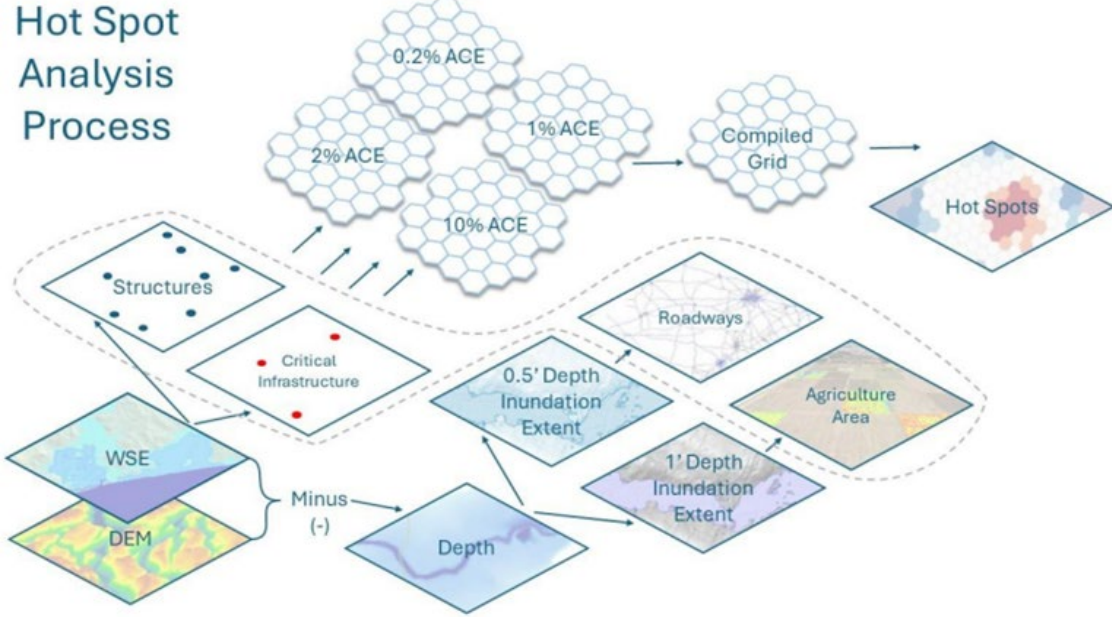
Electronically signed & sealed on January 27, 2025.

December 13, 2024

Texas General Land Office
Commissioner Dawn Buckingham, M.D.

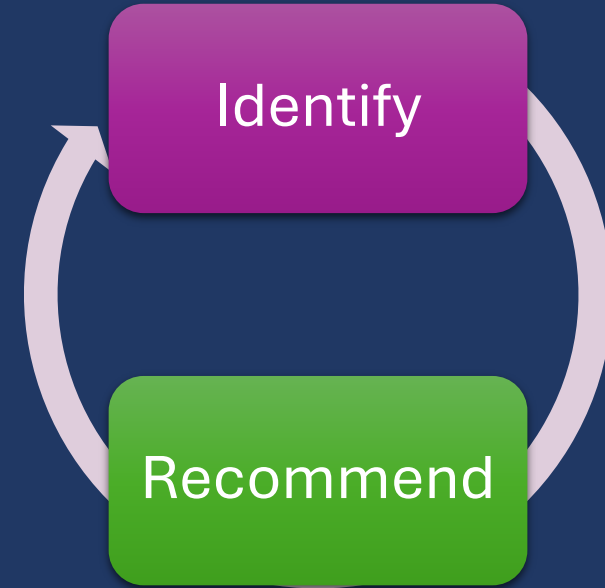


Identify Hot Spots

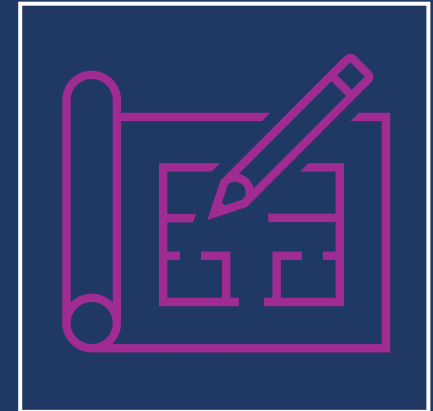
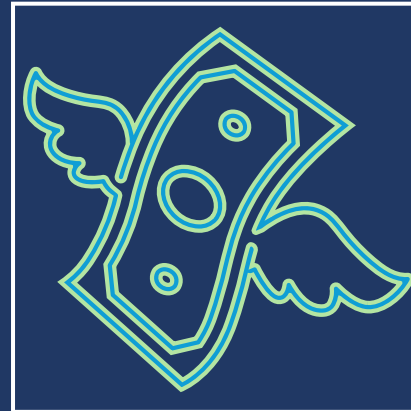


Next Steps

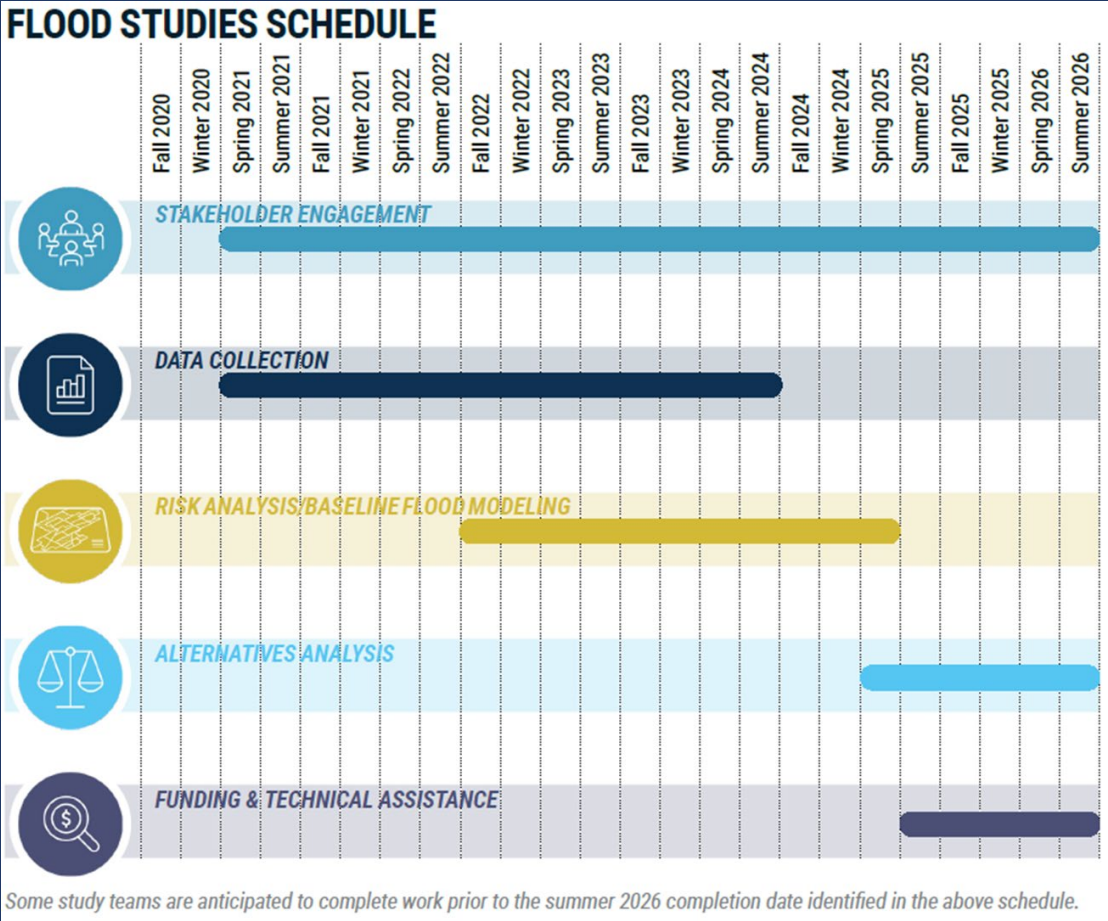
- Phase 4- Alternatives Analysis and recommended alternatives



- Phase 5 (FTA) – Funding and Technical Assistance



RBFS Schedule



Texas General Land Office
Commissioner Dawn Buckingham, M.D.



Questions?



Contact Krystle Haney or Skyler LeVrier



Krystle.Haney.glo@recovery.texas.gov

Skyler.LeVrier.glo@recovery.texas.gov

 Texas General Land Office

 @glotx

 @txglo

Texas General Land Office
Commissioner Dawn Buckingham, M.D.

