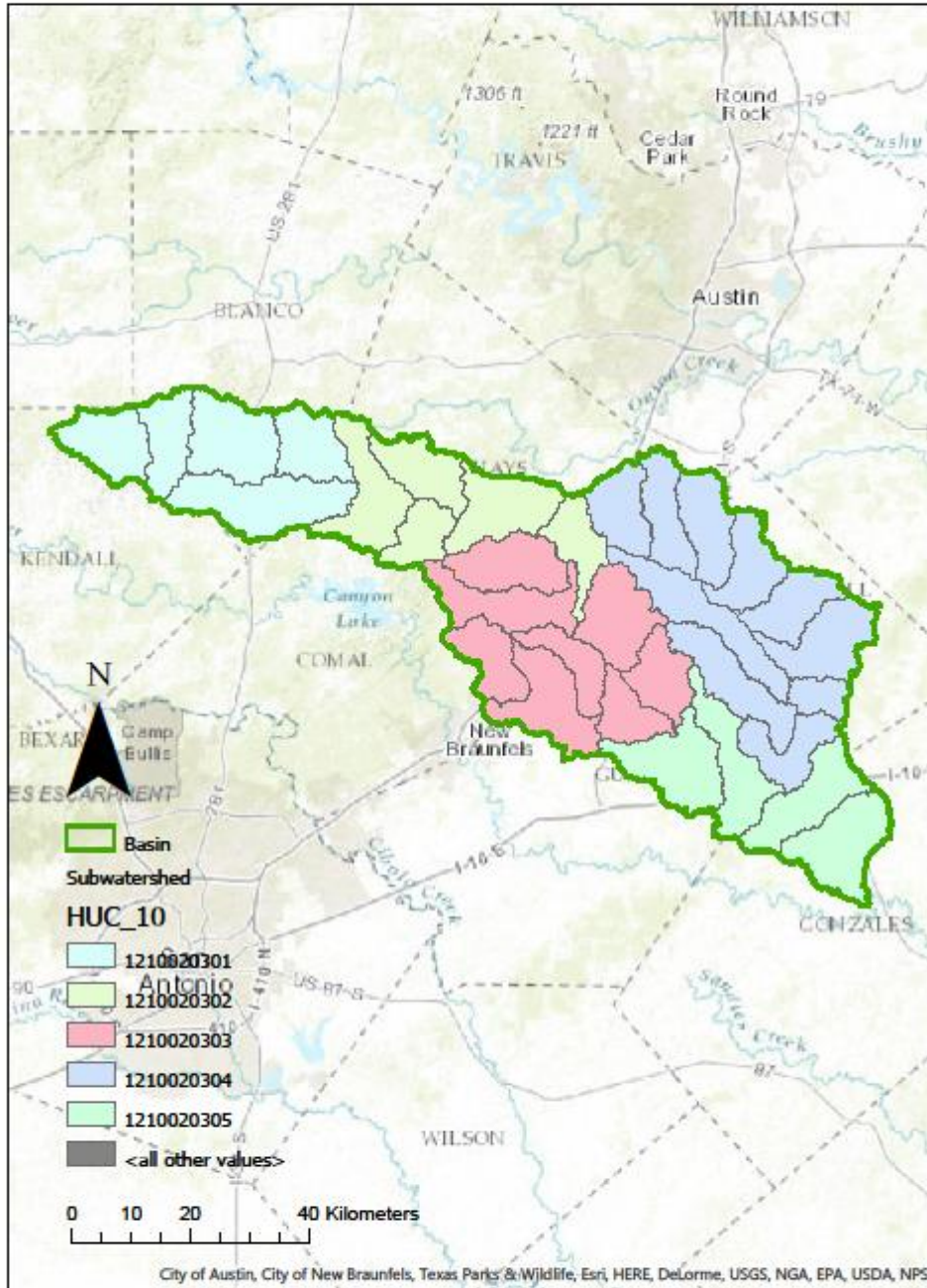


- 1. 5 HUC10 units, 32 HUC12 units.

San Marcos Basin and Subwatersheds

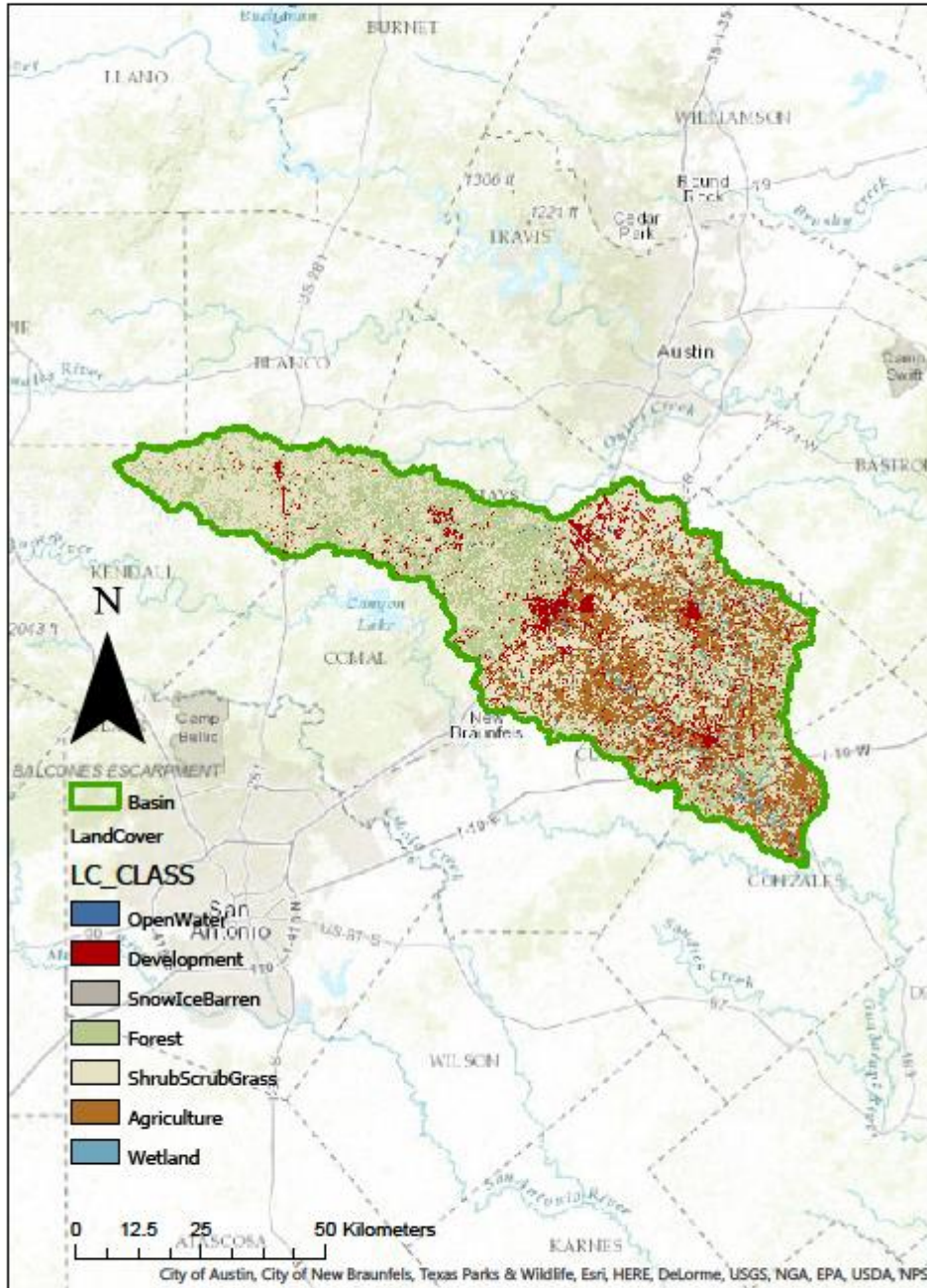
Prepared by Paul Ruess, September 7, 2016



2.

San Marcos Basin Land Cover from NLCD

Prepared by Paul Ruess, September 7, 2016

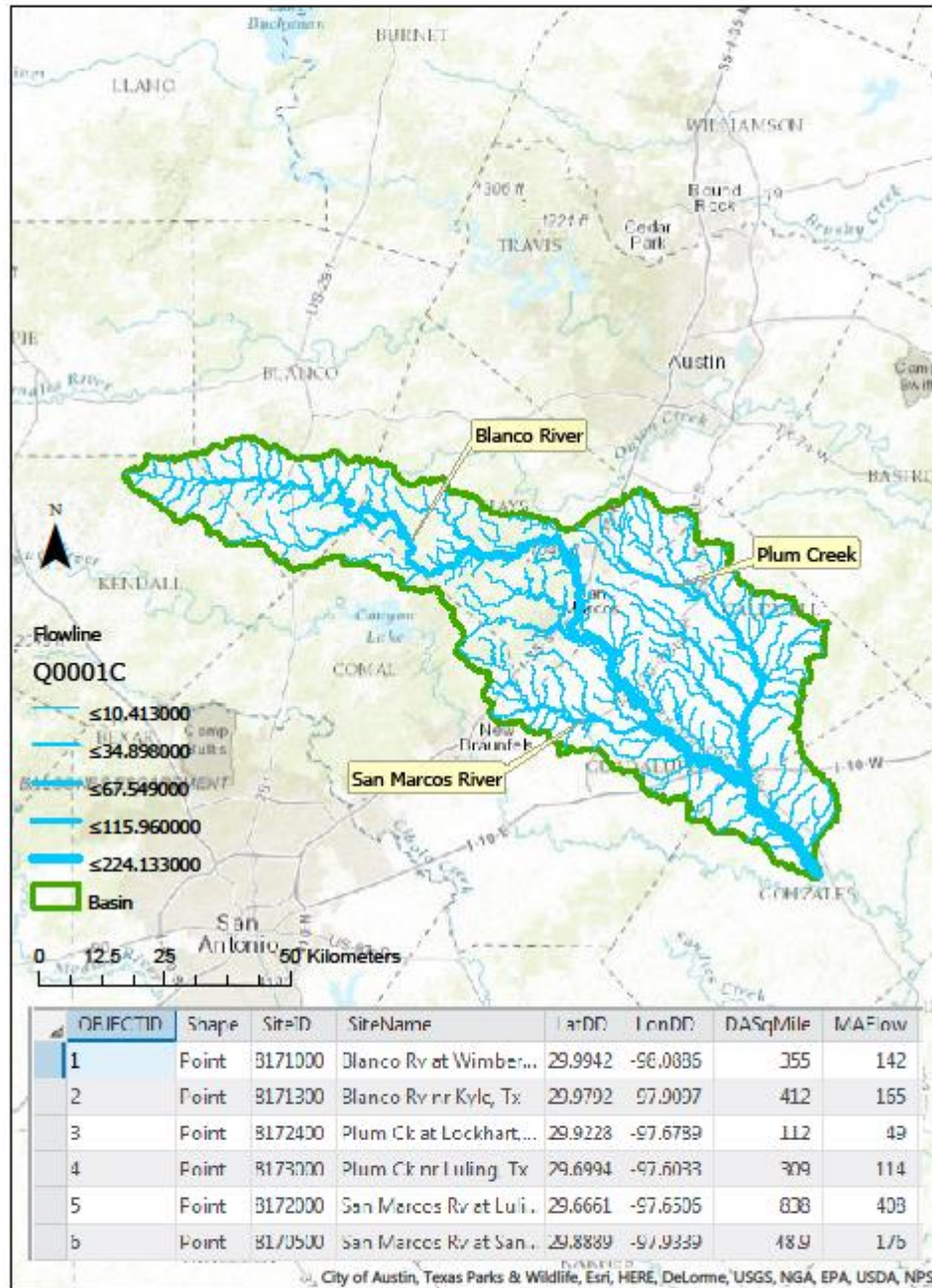


OBJECTID	LC_CLASS	FREQUENCY	SUM_Count	SUM_Area	Perc_Total
1	Agriculture	2	1002316	902.08	19.20
2	Development	4	481696	433.53	9.23
3	Forest	3	1350247	1215.22	25.87
4	OpenWater	1	22455	20.21	0.43
5	ShrubScrubGrass	2	2244878	2020.39	43.01
6	SnowIceBarren	1	8890	8.00	0.17
7	Wetland	2	109451	98.51	2.10

- 557 flowlines, average length: 3.39km
555 catchments, average area: 6.34sqkm

San Marcos Flowlines

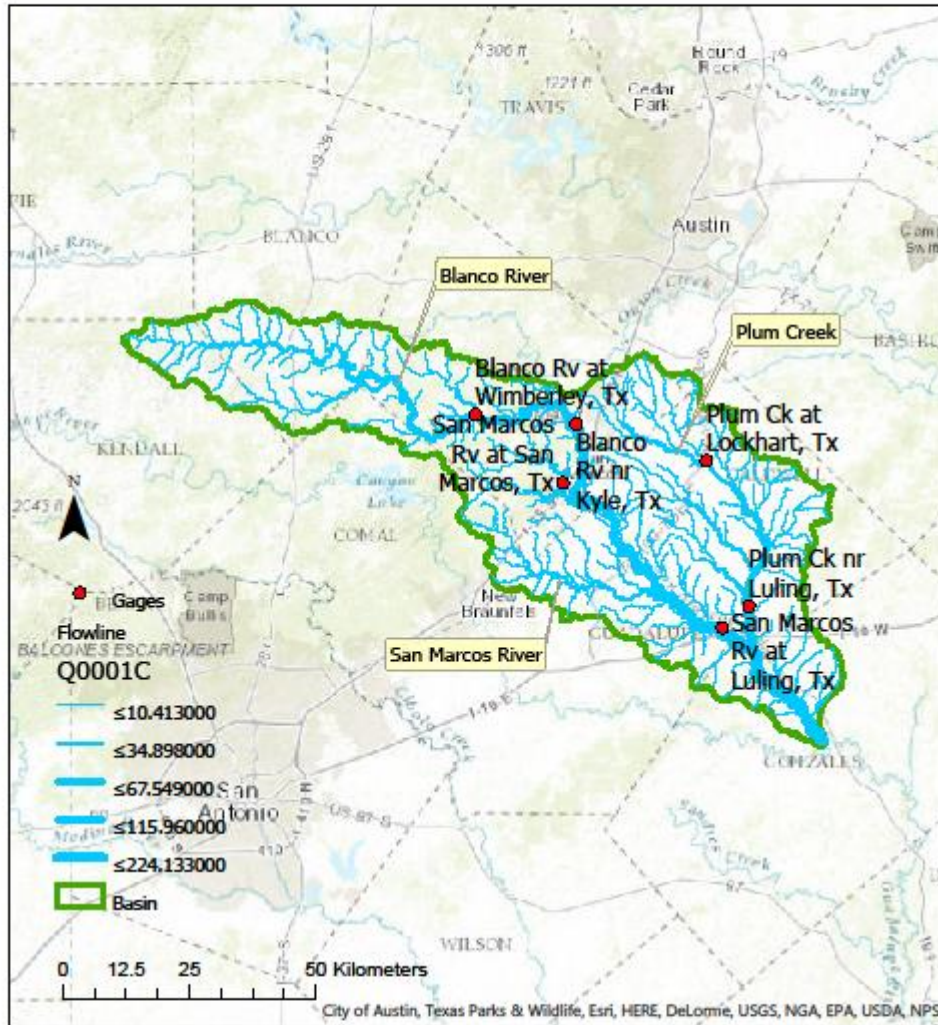
Prepared by Paul Ruess, September 7, 2016



4.

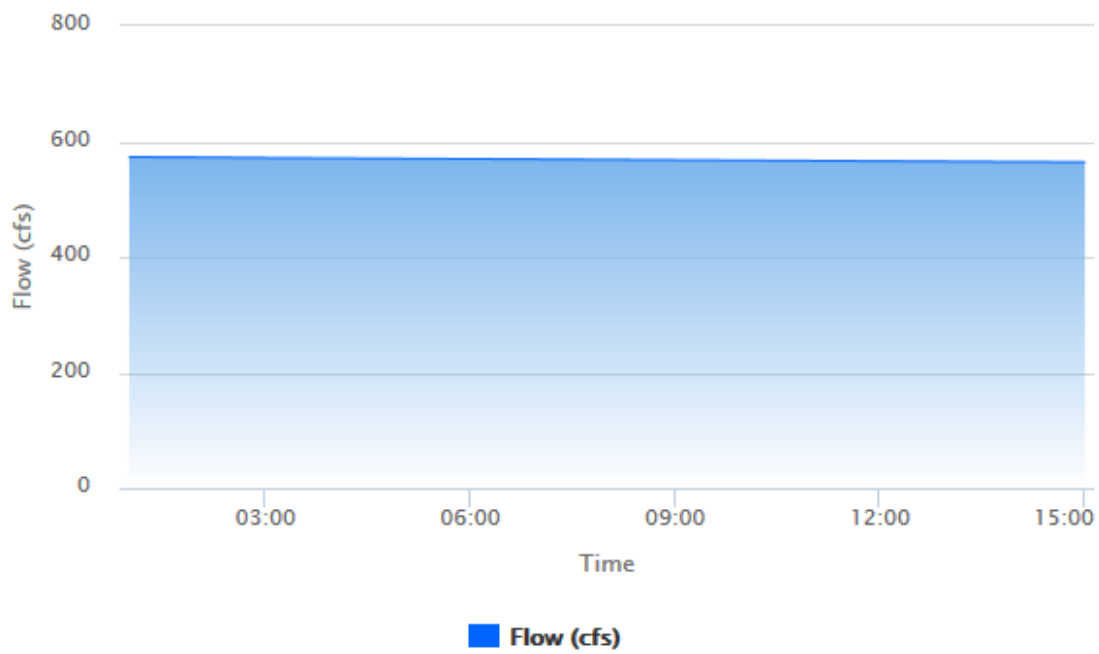
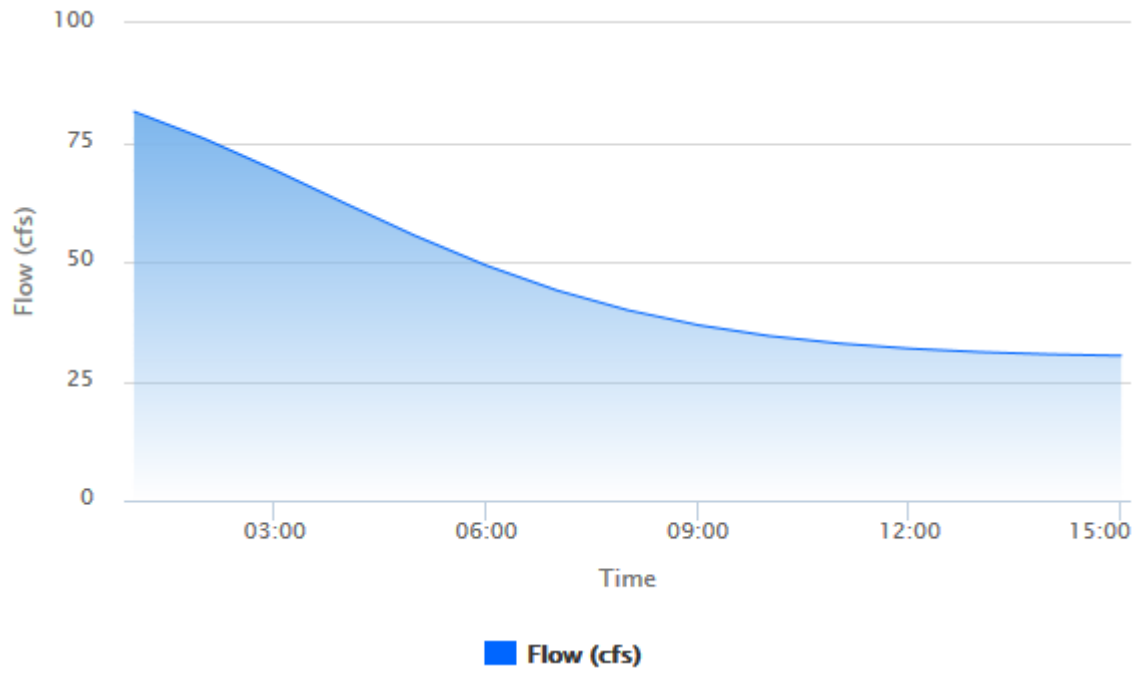
San Marcos Basin Stream Gages

Prepared by Paul Ruess, September 7, 2016



OBJECTID	Shape	SiteID	SiteName	LatDD	LonDD	DASqMile	MAFlow
1	Point	8171000	Blanco Rv at Wimber...	29.9942	-98.0886	355	142
2	Point	8171300	Blanco Rv nr Kyle, Tx	29.9792	-97.9097	412	165
3	Point	8172400	Plum Ck at Lockhart,...	29.9228	-97.6789	112	49
4	Point	8173000	Plum Ck nr Luling, Tx	29.6994	-97.6033	309	114
5	Point	8172000	San Marcos Rv at Luli...	29.6661	-97.6506	838	408
6	Point	8170500	San Marcos Rv at San...	29.8889	-97.9339	48.9	176

- 5. Flow at Wimberley (COMID 1630223) and downstream end (COMID 1632017). Ratio is flow at Wimberley / flow at downstream end.



DateTime	Flow (cfs)	Flow (cfs)
9/19/2016 1:00	81.48	573.28
9/19/2016 2:00	75.79	572.55
9/19/2016 3:00	69.20	571.84
9/19/2016 4:00	62.20	571.15
9/19/2016 5:00	55.37	570.47
9/19/2016 6:00	49.21	569.81
9/19/2016 7:00	44.02	569.16
9/19/2016 8:00	39.89	568.52
9/19/2016 9:00	36.76	567.89
9/19/2016 10:00	34.49	567.28
9/19/2016 11:00	32.91	566.67
9/19/2016 12:00	31.83	566.08
9/19/2016 13:00	31.11	565.49
9/19/2016 14:00	30.64	564.91
9/19/2016 15:00	30.33	564.32
Averages:	47.02	568.63
Ratio:		0.082683

Note: ratios will vary depending on timestamps of forecasts.