



## 1 **BACKGROUND**

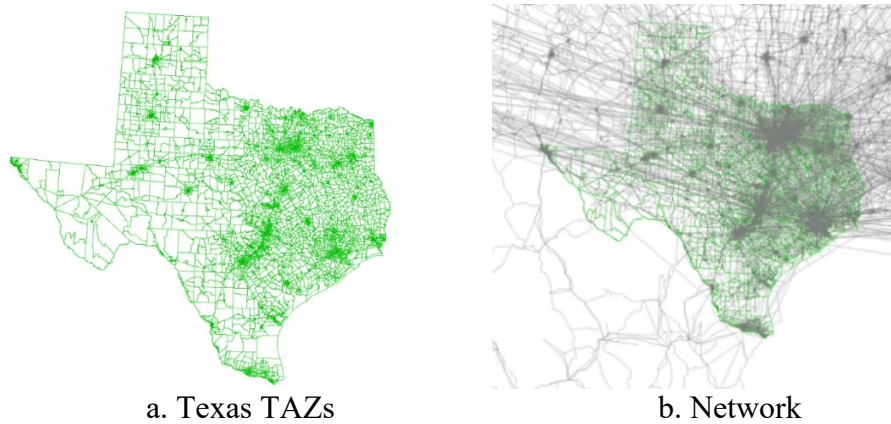
2 The rise of automated vehicles (AVs) is leading to significant developments in passenger and  
3 freight travel across urban and regional landscapes. As traditional barriers like the burden of  
4 driving and the hefty, fixed costs of vehicle ownership diminish, distant destinations and ground-  
5 based travel alternatives become more appealing, fundamentally altering mode choice (Zhao and  
6 Kockelman, 2018; Perrine et al., 2020; LaMondia et al., 2016). ATrucks free operators from  
7 driving duties and increase truck use by enabling rest breaks during the trip (Lee et al., 2023;  
8 Engholm and Pernestål, 2021). Currently, trucks dominate US inland freight transport (64% of the  
9 weight of annual shipments), moving 13,139 million tons in 2023 after pipeline and rail (5,297  
10 million tons) (FAF5, 2021). Future integration of truck platooning via low-latency vehicle-to-  
11 vehicle communication will also improve freight efficiency (Huang et al., 2020). The possibility  
12 of ATrucks performing additional tasks, such as autonomous freight pickups and deliveries, may  
13 also improve supply chains.

14 While AVs may dramatically lower crash counts, improving access for the elderly, disabled, and  
15 others (Harper et al., 2016; Fagnant and Kockelman 2015; Gurumurthy and Kockelman, 2018),  
16 their introduction will also change how people travel. AVs are projected to increase vehicle-miles  
17 traveled (VMT) and attract passengers away from public transit. LaMondia et al. (2016) and  
18 Perrine et al. (2020) estimated 50% shifts away from airlines and driving, and toward AVs and  
19 SAVs (especially for trips under 500 miles each way). The availability of SAVs is also expected  
20 to reduce US car ownership (Gurumurthy and Kockelman, 2018). This study not only integrates  
21 AVs and SAVs but also considers the effects of different vehicle occupancies of AVs and SAVs  
22 on transportation networks. Numerous recent studies have explored how SAVs may impact car  
23 ownership. In their study, Mamdoohi et al. (2023) showed that approximately 26% of participants  
24 were willing to reduce their private car ownership in favor of SAVs. Fonzone et al. (2024) also did  
25 similar research and showed that 7.3% of respondents were willing to use an autonomous bus (AB)  
26 as soon as it became available (indicating early adoption), while 13.3% of respondents expressed  
27 willingness to use an AB soon after they are available. The numbers showed a cautious but  
28 substantial interest in using ABs when integrated into the transportation network.

29 Hamadneh et al. (2023) found that men and high-income individuals are more inclined to use  
30 privately owned SAVs than women and lower-income groups. However, a notable gap exists in  
31 understanding how these vehicles are used across different party sizes. The ride-hailing service  
32 providers with SAV fleets have the potential to streamline passenger flow, reducing wait times  
33 and enhancing connectivity between various modes of transportation. Furthermore, these providers  
34 improve fleet usage by optimizing routes and schedules based on real-time data, thus minimizing  
35 idle times and boosting the operational efficiency of transport services (Xu et al., 2024). Despite  
36 numerous studies investigating public preferences for AVs across various travel distances and  
37 purposes (e.g., Maleki and Arani, 2021; Ashkrof et al., 2019; Truong et al., 2017; Haboucha and  
38 Shifan, 2017), there remains a notable gap in the application of studies across realistic settings.  
39 This study fills this gap by integrating AVs, SAVs, and ATrucks into Texas' statewide demand  
40 model (SAM) and evaluating their impacts on freight and long-distance passenger travel. The  
41 following sections describe the model briefly, detail changes to the mode choice modules, provide  
42 simulation results, and then deliver conclusions.

## 43 **DATA SET**

1 This study centers on travel demand modeling using TransCAD software, which supports a four-  
2 step travel demand model called SAM. SAM is a multi-modal travel tool maintained by the Texas  
3 Department of Transportation (TxDOT) and developed by the Alliance Transportation Group  
4 (ATG). SAM covers North America, focusing on regions in and around Texas. Figure 1 represents  
5 the state's extensive network of highways, railways, and airline routes, with 228,562 links, 166,039  
6 nodes, and 6,860 traffic analysis zones (TAZs). It has passenger and freight models, which follow  
7 a four-step structure (from trip generation to destination, mode, and route choices, with feedback).  
8 Passenger vehicles and freight trucks are combined for network loading in the highway assignment  
9 step. The SAM simulation comprehensively analyzes travel patterns involving a substantial  
10 population of 40.2 million individuals distributed across 13.5 million households within Texas.  
11 These households have an average size of 2.98 individuals, and the population-to-employment  
12 ratio is 2.1.



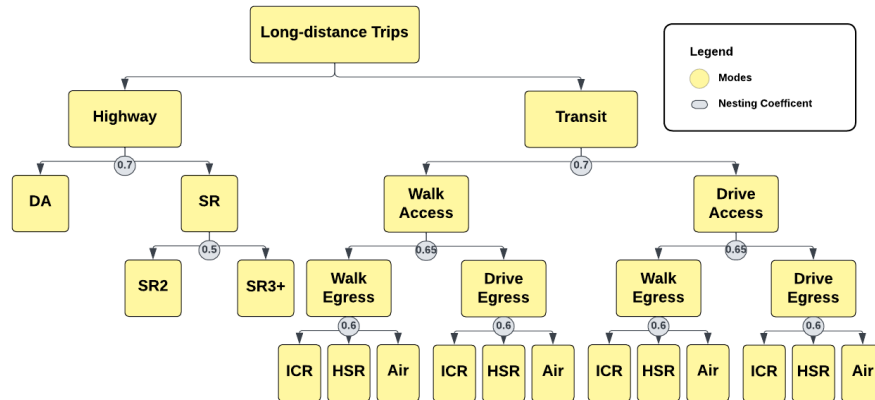
15 Figure 1. SAM-V4 TAZ and Network File

16 **Passenger Model**

17 The passenger model in SAM-V4 uses destination choice models to distribute most short-distance  
18 trips (less than 50 miles) and all long-distance trips (50 miles or greater). In contrast, gravity  
19 models are applied for other short-distance trips such as home-based K-12 school trips, non-home-  
20 based visitor trips, and non-freight truck trips. The model time-of-day step categorizes highway  
21 passenger trips and freight truck trips into four time periods: morning (AM) peak period, mid-day  
22 (MD) period, afternoon (PM) peak period, and night (NT) period, for final assignment according  
23 to these periods. Mode share factors, which vary based on the transit accessibility of a TAZ, are  
24 applied for short-distance trips. A four-level nested-logit mode choice model is used for long-  
25 distance trips, including auto, intercity rail, high-speed rail, and air travel.

26 The passenger model reflects three trip types: short-distance, long-distance, and non-freight truck  
27 trips. Short-distance passenger trips are those under 50 miles one-way, including home-based work  
28 trips (HBW), home-based other trips (HBO), home-based K-12 school trips (HBS), non-home-  
29 based other trips (NHBO), and non-home-based visitor trips (NHBV) trips. Long-distance trips  
30 are those over 50 miles (one-way) within Texas or between Texas and the continental US (and  
31 may take more than 24 hours). SAM-V4 distinguishes these by purpose and distance: infrequent  
32 long-distance business and non-business/other trips are between 50 and 400 miles (ILDB and  
33 ILDO), while infrequent and very long- (or “long long”) distance trips (400+ miles) for business  
34 and non-business/other purposes are ILLB and ILLO. Non-freight truck trips are short-distance  
35 trips not captured by the freight model, serving local areas with purposes like contractors

1 delivering goods and services to households. Fixed mode-split factors were applied to estimate the  
 2 mode split for short-distance trips, while a nested logit (Figure 2) was used for trips over 50 miles.

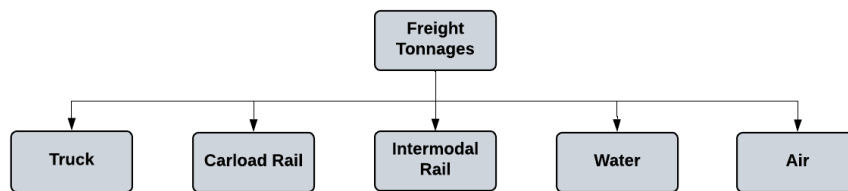


3  
 4 Figure 2. SAM-V4 Passenger Long-Distance Mode Choice Nested-Logit Structure and Nesting  
 5 Coefficients (Source: Alliance Transportation Group, 2019)

6 Note: DA = Drive Alone, SR = Share Ride, ICR = Intercity Rail, HSR = High-Speed Rail

7  
 8 **Freight Model**

9 The SAM-V4 freight models were developed using 2015 TranSearch data, classifying goods into  
 10 15 distinct groups, as shown in Table 1. A four-step travel demand model combines freight trips  
 11 with passenger travel in the final step of traffic assignment. The freight mode choice model consists  
 12 of truck, carload rail, intermodal rail, water, and air, as shown in Figure 3. An incremental logit  
 13 choice method pivots off existing mode shares (as found in the base scenario) as time and cost  
 14 parameters change. The freight model’s coefficients were estimated using Texas 2015 TranSearch  
 15 commodities flow data, with results shown in Table 2. After mode splits are produced, SAM’s  
 16 tonnage estimates (by commodity) are divided into separate truck trips and loaded on the roadway  
 17 network. Interestingly, the freight model has just 348 TAZs: 254 Texas counties plus 48 US states  
 18 (all but Hawaii), the District of Columbia, 32 Mexico states, and 13 Canadian provinces.



19  
 20 Figure 3. SAM-V4 Freight Mode Choice Structure (Source: ATG, 2019)

21  
 22  
 23 Table 1. SAM-V4 Freight Mode Choice Coefficients (Source: ATG, 2019)

#	Commodity Name	Carload Constant	IMX Constant	Cost Coef.	Time Coef.	# of IMX Coef.
---	----------------	------------------	--------------	------------	------------	----------------

1	Agriculture	5.481	-4.277	-0.0063	0	0.0469
2	Metallic Ore & Coal Mining	4.124	-3.1	-0.0032	-0.0584	0
3	Crude Petroleum or Nat. Gas	3.549	0	0	-0.0162	0
4	Nonmetallic Minerals	-0.679	-8.4338	-0.0061	0	0.0998
5	Food	-3.279	-2.7486	-0.0058	0	0.0406
6	Consumer Manufacturing	0	0	-0.0019	-0.042	0.0409
7	Non-Durable Manufacturing	-3.757	-6.5606	-0.0059	0	0.0279
8	Lumber	-4.016	-8.0001	-0.0011	-0.0131	0.0461
9	Durable Manufacturing	-2.860	-6.4946	-0.0017	0	0.0317
10	Paper	-0.619	-3.0581	-0.009	0	0.0414
11	Chemicals	-2.341	-6.0239	-0.0045	0	0
12	Petroleum	-3.092	-8.4885	-0.0056	0	0.0854
13	Clay, Concrete, Glass	-3.336	-7.1387	-0.0064	0	0.0368
14	Primary Metal	-1.887	-4.321	-0.006	0	0
15	Secondary & Misc. Mixed	-3.176	4.5037	-0.0077	0	0.0529

1  
2

Table 2. SAV-V4 Mode Choice Parameters (Source: ATG, 2019)

Parameters	Mode		
	Truck	Carload	IMX
Cost rate (\$/ton-mile)	0.1986	0.0191	0.0362
Time rate	1	1	1
Cost Constant	0	10.3	42.94
Drayage access	-	-	0.1986

### 3 METHODOLOGY

4 The mode choice models for passenger and freight transportation were updated to incorporate  
5 AVs, SAVs, and ATrucks. To account for the anticipated spike in vehicle-miles traveled due to  
6 the implementation of AVs, a 15% rise in trip production rates has been included. The rise  
7 acknowledges a potential growth in ground travel demand that would result from providing  
8 transportation for people who are elderly, those who do not have driver's licenses, or those with  
9 mobility limitations. These modifications align with research by Harper et al. (2016), which  
10 calculated a 14% rise in U.S. VMT due to non-driving individuals, senior citizens, and people with  
11 medical issues that hinder traditional modes of transportation.

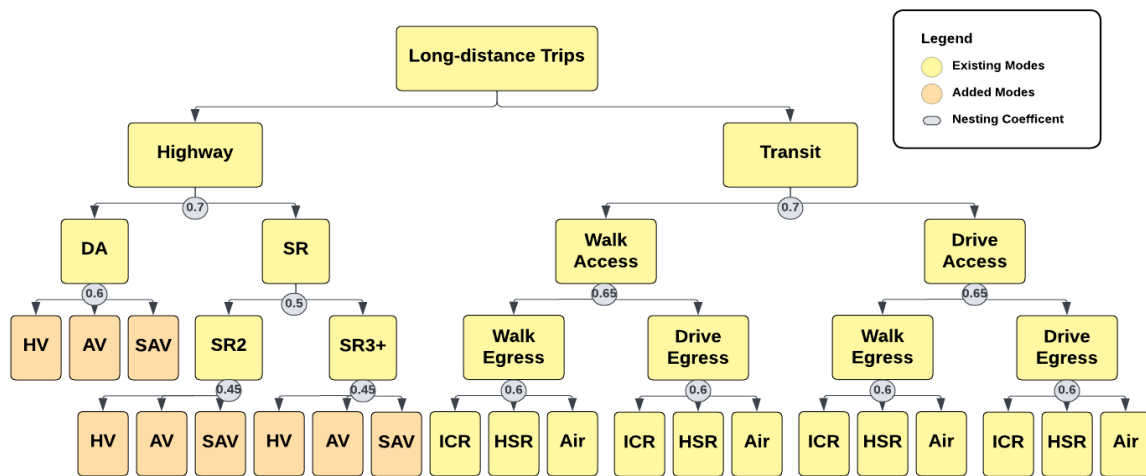
#### 12 *Short-Distance Passenger Mode Choice*

13 SAM uses mode shares determined by transit availability for various trip purposes and income  
14 brackets for short-distance trips. Four different options are being evaluated for short travels,  
15 including Drive-alone (DA), Shared-Ride 2 (SR2), Shared-Ride 3 or more people (SR3+), and  
16 "Other" modes. The "Other" category includes transportation modes such as buses, urban rail,  
17 ferries, and other modes not specified in the survey questionnaire. It uses several parameters

1 depending on three sorts of areas: "No Transit Available Area," "Bus Available Area," and "Urban  
 2 Rail Available Area." In areas without transit, DA, SR2, and SR3+ values of 40% for HVs, 40%  
 3 for AVs, and 20% for SAVs were assumed. Similarly, in areas with transit availability (bus and  
 4 urban rail available areas), 40% for HVs, 40% for AVs, and 20% for SAVs were assumed for DA,  
 5 SR2, and SR3+, mirroring the previous case with a 50% reduction in the mode shares of "Other"  
 6 modes. Zhao et al. (2018) predicted that 66% of all automobile users will choose AVs or SAVs.  
 7 Litman (2020) predicted that AVs will make up 30% of the U.S. fleet by 2040, while other research  
 8 suggests that AVs might range from 25% to 87% of the U.S. fleet by 2045, depending on various  
 9 assumptions (Bansal and Kockelman, 2016). Huang et al. (2021) found that for trips between 75  
 10 and 500 miles, business trips were split approximately 23% HV, 28% AV, and 17% SAV, whereas  
 11 non-business trips were split 37% HV, 15% AV, and 34% SAV.

12 **Long-Distance Passenger Mode Choice**

13 SAM's nested logit model was adjusted to include HV, AV, and SAV for trips exceeding 50 miles.  
 14 The modes were categorized under DA, SR2, and SR3+. The nesting order was established based  
 15 on individuals' tendency to choose a transportation mode depending on party size. Figure 4 shows  
 16 the revised nesting structure along with the assumed nesting coefficients. Table 3 presents the  
 17 mode choice constants (ASCs), explanatory variable coefficients used in the model, and the default  
 18 values established in the base. The parameters were chosen using the SAM-V4 base model and a  
 19 comparable model adjusted by Huang et al. (2020). Individual trips generated at the mode choice  
 20 stage are converted into vehicle trips before traffic assignment. Auto occupancy rates for SR3+  
 21 trips in SAM were determined according to trip purpose and income group using NHTS data.  
 22 These rates ranged from 3 to 4.79, except for a rate of 7.57 for ILLO trips by those in income  
 23 group 3. This 7.57 seems relatively high, especially since the long-distance mode choice model  
 24 does not include bus modes. This could be a potential error in SAM, where a small sample of bus  
 25 modes in the NHTS was accidentally considered while estimating these rates.  
 26  
 27



28  
 29 Figure 4. AV/ATruck Scenario Long-Distance Mode Choice Nested-Logit Structure and Nesting  
 30 Coefficients (DA – Drive Alone, SR – Share Ride, ICR – Intercity Rail, HSR – High-Speed Rail)  
 31

32 Table 3. Passenger Model Parameters

<b>NO-AV SCENARIO</b>
-----------------------

<b>Mode</b>		<b>ILDB</b>	<b>ILDO</b>	<b>ILLB</b>	<b>ILLO</b>
Drive Alone (DA)		N/A	N/A	N/A	N/A
Shared-Ride 2 (SR2)		-1.5	-0.1	-3	-0.8
SR 3+ (SR3+)		-2	-0.2	-4.2	-2
High-Speed Rail (HSR)		-1.1	-2.5	2.5	-0.4
Intercity Rail (ICR)		-5	-3.8	-5	-2.5
Air		-1.1	-2.5	2.5	0
Auto Operating Cost (\$/mile)		0.346	0.17	0.346	0.17
In-Vehicle Time Coefficient		-0.02	-0.01	-0.02	-0.01
Out-of-Vehicle Time Coefficient		-0.02	-0.01	-0.02	-0.01
Travel Cost Coefficient	Income I	-0.1664	-0.1109	-0.1664	-0.1109
	Income II	-0.0555	-0.037	-0.0555	-0.037
	Income III	-0.0277	-0.0185	-0.0277	-0.0185
	Income IV	-0.0166	-0.0111	-0.0166	-0.0111
<b>AV/ATRUCK SCENARIO</b>					
<b>Mode</b>		<b>ILDB</b>	<b>ILDO</b>	<b>ILLB</b>	<b>ILLO</b>
DA	Human-Driven Vehicles (HV)	N/A	N/A	N/A	N/A
	Autonomous Vehicles (AV)	-0.05	-0.05	-0.05	-0.05
	Shared Autonomous Vehicles (SAV)	-0.2	-0.2	-0.2	-0.2
SR2	HV	-1.5	-0.1	-3	-0.8
	AV	-1.55	-0.15	-3.05	-0.85
	SAV	-1.7	-0.3	-3.2	-1
SR3+	HV	-2	-0.2	-4.2	-2
	AV	-2.05	-0.25	-4.25	-2.05
	SAV	-2.2	-0.4	-4.4	-2.2
High-Speed Rail (HSR)		-1.10	-2.50	2.50	-0.40
Intercity Rail (ICR)		-5	-3.8	-5	-2.5
Air		-1.1	-2.5	2.5	-0.4
HV Operating Cost (\$/mile)		0.346	0.17	0.346	0.17
AV Operating Cost (\$/mile)		0.6	0.6	0.6	0.6
SAV Operating Cost (\$/mile)		1	1	1	1
In-vehicle Time Coefficient		-0.02	-0.01	-0.02	-0.01
Out-of-vehicle Time Coefficient		-0.02	-0.01	-0.02	-0.01
Travel Cost Coefficient	Income I	-0.1664	-0.1109	-0.1664	-0.1109
	Income II	-0.0555	-0.037	-0.0555	-0.037
	Income III	-0.0277	-0.0185	-0.0277	-0.0185
	Income IV	-0.0166	-0.0111	-0.0166	-0.0111

1

## 2 *Freight Mode Choice*

3 The freight mode choice was updated to include ATrucks as a new category. These ATrucks are  
4 nested under the broader truck mode, separating automated trucks (ATrucks) from human-driven  
5 trucks (HTrucks). The Texas megaregion study by Huang et al. (2020) was again used as a starting

1 point for the model parameters, assuming a nesting coefficient of 0.7 for HTrucks to reflect the  
 2 relative substitutability between the two modes. The operating costs for ATrucks were assumed to  
 3 be 50% more than those of HTrucks to account for automation equipment costs and additional  
 4 training expenses for humans supervising the truck, with a 25% reduction in VOTT. No rest time  
 5 was assumed for ATrucks (as opposed to the 13 hours of rest accounted for HTrucks after every  
 6 11 hours of driving). The ATruck travel time skim was assumed to be 0.42 times that of HTruck,  
 7 reflecting the ability of automated trucks to drive 24 hours a day. The time coefficient for 11 of 15  
 8 commodities in SAM-V4 is 0.00 (Table 4). Therefore, time and cost coefficients were re-estimated  
 9 for the 11 commodities by halving the beta of cost and choosing the beta time coefficients carefully  
 10 so those newly added multiples would make up for the reduction in the beta cost\*cost terms. This  
 11 was done by taking half the cost coefficients and selecting 11-time coefficients to minimize errors  
 12 in hitting current rail/truck splits (no AV scenario) for each commodity's top 50+ OD pairs. This  
 13 process was repeated for 11 commodities. Table 4 shows the updated coefficients for all the  
 14 commodities.

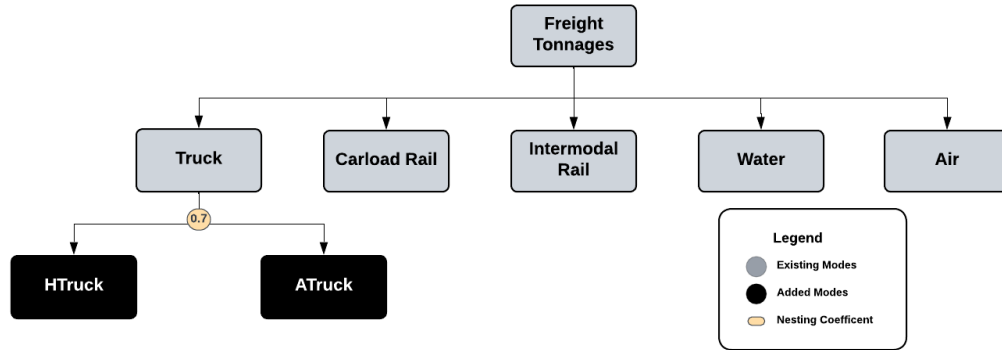
15

Table 4 Freight Mode Choice Coefficients

Commodity Group #	Original		Modified		Original		
	Time Coeff.	Cost Coeff.	Time Coeff.	Cost Coeff.	Carload Constant	IMX Constant	IMX # Coeff.
1	0	- 0.0063	- 0.01843	- 0.00315	5.4809	-0.4277	0.0469
2	-0.0584	- 0.0032	-0.0584	-0.0032	4.1237	-3.1	0
3	-0.0162	0	-0.0162	0	3.549	0	0
4	0	- 0.0061	- 0.18701	- 0.00305	-0.6799	-8.4338	0.0998
5	0	- 0.0058	- 0.01368	-0.0029	-3.2788	-2.7486	0.0406
6	-0.042	- 0.0019	-0.042	-0.0019	0	0	0.0409
7	0	- 0.0059	- 0.05899	- 0.00295	-3.7565	-6.5606	0.0279
8	-0.0131	- 0.0011	-0.0131	-0.0011	-4.0162	-8.0001	0.0461
9	0	- 0.0017	- 0.00595	- 0.00085	-2.8602	-6.4946	0.0317
10	0	-0.009	-0.0365	-0.0045	-0.6198	-3.0581	0.0414
11	0	- 0.0045	- 0.04677	- 0.00225	-2.3405	-6.0239	0
12	0	- 0.0056	- 0.36019	-0.0028	-3.0916	-8.4885	0.0854
13	0	- 0.0064	- 0.41205	-0.0032	-3.3361	-7.1387	0.0368
14	0	-0.006	-0.0098	-0.003	-1.8875	-4.321	0
15	0	- 0.0077	- 0.02697	- 0.00385	-3.1761	4.5037	0.0529



1 As mentioned, the SAM-V4 freight mode choice model uses an incremental logit structure that  
 2 builds upon existing base share. However, with the introduction of ATruck and the associated  
 3 changes in the model structure, the calculations for mode shares needed to be updated.



4  
 5 Figure 5. AV/ATruck Scenario Mode Choice Structure and Nesting Coefficient

6 The utilities of HTruck and ATruck for every commodity group and zone pair were computed  
 7 using travel time, cost, and modal constant terms, similar to the approach followed in the base  
 8 model. The utility calculation for ATruck is shown as an example below:

9  
 10 
$$U_{ij}^{ATruck,k} = ASC^{ATruck,k} + \beta_t^{ATruck} * Travel\ Time_{ij} + \beta_c^{ATruck} * (Cost\ Rate\ per\ ton - mile * Distance_{ij})$$

11 where  $ASC^{ATruck,k}$  is the alternate specific constant,  $\beta_t^{ATruck}$  is the time coefficient, and  $\beta_c^{ATruck}$   
 12 is the cost coefficient for ATrucks, for commodity k from zone i to j. Next, the utility of the truck  
 13 mode was determined by calculating the log sum of the utilities of HTruck and ATruck,  
 14 considering the nesting coefficient. The formula for this calculation is expressed below:

15 
$$U_{ij}^{Truck,k} = \theta * \log \log \left( e^{\left(\frac{U_{ij}^{HTruck,k}}{\theta}\right)} + e^{\left(\frac{U_{ij}^{ATruck,k}}{\theta}\right)} \right)$$

16 where  $\theta$  = Nesting Coefficient and  $U_{ij}$  = Utility for specified mode for commodity k from zone  
 17 i to j. Following this, the new truck share or probability was calculated using the same methodology  
 18 as before, using the base mode shares. The incremental logit model form as followed in the AV  
 19 base or no AV scenario model is shown below: For every mode m, in commodity group k, from  
 20 zone i to j:

21 
$$New\ Mode\ Share_{ij}^{m,k} = \frac{Existing\ Mode\ Share_{ij}^{m,k} * e^{\Delta U_{ij}^{m,k}}}{\sum (Existing\ Mode\ Share_{ij}^{m,k} * e^{\Delta U_{ij}^{m,k}})} \text{ for all } m \text{ in } k$$

22 where  $\Delta U_{ij}^{m,k}$  = Change in Utility

23 For Truck mode, the change in utility is determined by comparing the newly calculated utility of  
 24 the truck mode, which involves taking the log sum of HTruck and ATruck with the previous utility  
 25 of the truck mode before introducing the new mode (and nest). The shares of ATruck and HTruck

1 in every zone pair) were then derived from the total number of truck trips (which is calculated by  
 2 multiplying the new truck share with the total number of trips from each zone i to zone j) as shown  
 3 below:

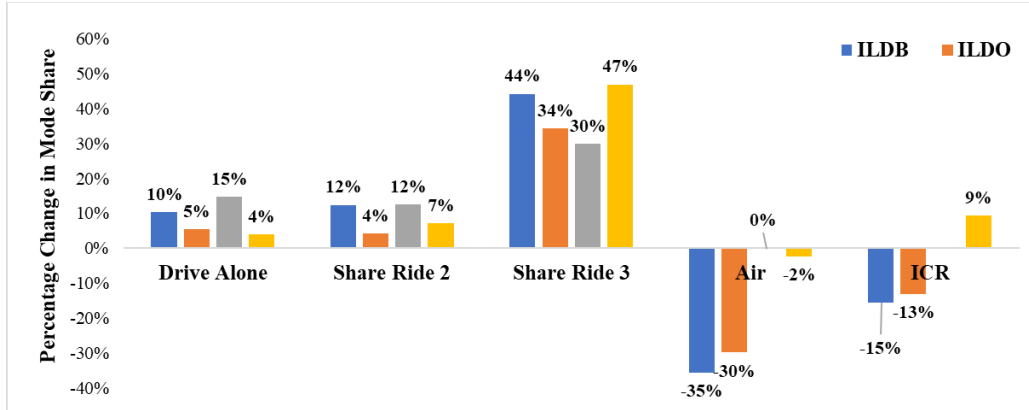
$$\begin{aligned}
 4 \quad ATruhare_{ij}^k &= Total\ Truck\ Trips * \frac{e^{\left(\frac{U_{ij}^{ATruck,k}}{\theta}\right)}}{e^{\left(\frac{U_{ij}^{HTruck,k}}{\theta}\right)} + e^{\left(\frac{U_{ij}^{ATruck,k}}{\theta}\right)}} HTruck\ Share_{ij}^k \\
 5 \quad &= Total\ Truck\ Trips * \frac{e^{\left(\frac{U_{ij}^{HTruck,k}}{\theta}\right)}}{e^{\left(\frac{U_{ij}^{HTruck,k}}{\theta}\right)} + e^{\left(\frac{U_{ij}^{ATruck,k}}{\theta}\right)}}
 \end{aligned}$$

6 where  $\theta$  = Nesting Coefficient and  $U_{ij}$  = Utility for specified mode for commodity k from zone  
 7 i to j.

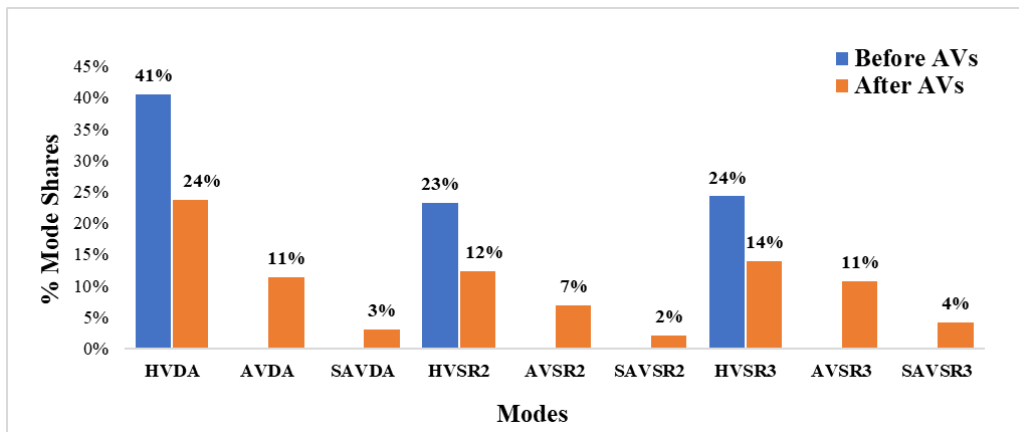
## 8 RESULTS

9 The “No-AV/ATruck Scenario” model serves as a benchmark for assessing the impacts of  
 10 AV/ATruck inclusion in the network. For both models, SAM’s weekday module selected a typical  
 11 weekday as the basis for the analysis. Feedback loops iterating from traffic assignment’s  
 12 equilibrium travel times to trip distribution’s destination choices were not included in these model  
 13 runs because run times were extremely long (24+ hours per scenario). SAV occupancy was  
 14 reduced by 20% after the mode choice stage to ensure the appropriate inclusion of empty VMT  
 15 (eVMT). The VOTT for AVs and SAVs was assumed to be 20% less than traditional HVs (HVs),  
 16 and ATrucks were assumed to have a 25% reduced VOTT compared to HTrucks. No rest time was  
 17 assumed for ATrucks (as opposed to the 13 hours of rest accounted for HTrucks after every 11  
 18 hours of driving). The ATruck travel time skim was assumed to be 0.42 times that of HTruck,  
 19 reflecting the ability of automated trucks to drive 24 hours a day. Previously, the time coefficient  
 20 for 11 out of 15 commodities in SAM-V4 was 0. Therefore, time and cost coefficients were re-  
 21 estimated for these commodities by adjusting betas of cost and time.

22 The mode splits for short-distance trips (<50 miles) remained fixed even with the introduction of  
 23 AVs. Integrating AVs into the mode choice model for long-distance (> 50 miles) passenger travel  
 24 revealed that personal AVs captured a 14% market share. At the same time, the human-driven  
 25 "drive alone" mode experienced a 17% fall as individuals shifted to AVs. This shift may be  
 26 attributed to a 25% reduction in VOTT, allowing individuals to use their time more effectively  
 27 with AVs. Additionally, mode shares showed a 7% rise in AV driving with two occupants and an  
 28 11% in AV driving with three or more occupants, as shown in Figure 11. Figure 12 shows that the  
 29 introduction of AVs has led to a rise in business trips, with SAVs spanning 50-400 miles and non-  
 30 business trips exceeding 400 miles by 44% and 47%, respectively. At the same time, air mode lost  
 31 20% of business trips and 15% of non-business trips within 400 miles. The surge in air travel  
 32 within the 400-mile range can be attributed to the assumption of a 15% rise in trip frequency  
 33 following the introduction of AVs. Inter-city rail, too, witnessed a decline in market share by 15%  
 34 and 13% for business and non-business long-distance trips, respectively.



1  
2 Figure 6. Percentage Change in Person Trips of Long-Distance Travel (> 50 miles one way) No-  
3 AV vs AV Base Scenario



4  
5 Figure 7. Percentage Change in Person Trips for Ground Travel: No-AV vs AV Base Scenario  
6 (HV = human-driven vehicle, DA = drive alone, SR2/3 = shared ride with 2/3 persons)

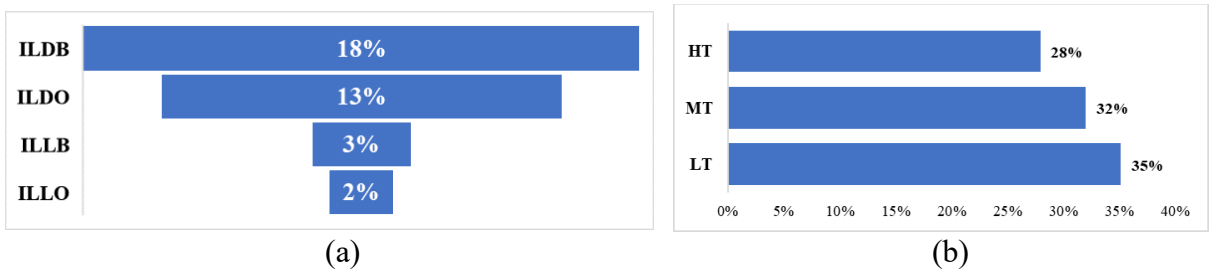
7 In the case of SAV driving, there was a modest 3% rise in AV driving with two occupants and a  
8 4% rise with three or more occupants. On the other hand, there was a 5% and 10% decrease in  
9 human-driven shared rides with two occupants and shared human driving with three or more  
10 occupants, respectively. As shown in Figure 8 (a), incorporating AVs into the transportation  
11 system has led travelers to opt for more distant locations than their previous choices. Additionally,  
12 the ability to spend time in alternative ways while inside AVs has increased the possibility of  
13 making trips, particularly for work-related trips that were previously deemed too far. Hence, we  
14 observed an 18% rise in average trip length for infrequent long-distance business trips and a 13%  
15 rise for non-business trips exceeding 50 miles but less than 400 miles. As shown in Figure 8 (b),  
16 there was a substantial rise in average trip length across various vehicle categories, with light-duty,  
17 medium-duty, and heavy-duty trucks witnessing rises of 35%, 32%, and 28%, respectively. This  
18 trend suggests a tendency to cover greater distances, likely due to removing driving burdens in AV  
19 modes. Furthermore, the rise in the number of hours vehicles spend on all types of roads also  
20 indicates a fall in average speeds.

21 Figure 10 illustrates the PMT in ton-miles for business and non-business travel ranging from 50 to  
22 400 miles, across passenger cars in the AV scenario. AV inclusion has impacted the person-miles  
23 traveled (PMT) across various travel and trip purposes. Specifically for business trips, the PMT

1 for 'drive alone' and 'shared rides with two passengers' rose by 7.6% and 12.2%, respectively.  
 2 Additionally, there was a substantial 49% rise in shared rides with three passengers. The results  
 3 show a 37% rise in shared rides with three passengers for non-business trips. Business trips indicate  
 4 a strong dependence on conventional vehicles (HVs). Solo drivers using HVs comprise the  
 5 most PMT at 35.7 million (0.89 miles/day/capita), while AVs have a decent level of acceptance  
 6 for individual business trips, covering 0.516 miles/day/capita (Figure 10). On the other hand, SAVs  
 7 are used very little, with only 3.8 million person-miles traveled. This could suggest that SAVs are  
 8 not widely available or that people are not very interested in using them, even when not sharing a  
 9 car with others. Regarding shared rides, HVs with two passengers had a 14.6% share in total PMT  
 10 (vs. 27% before AVs), and HVs with 3+ passengers made up 18% as opposed to 33% before AVs.

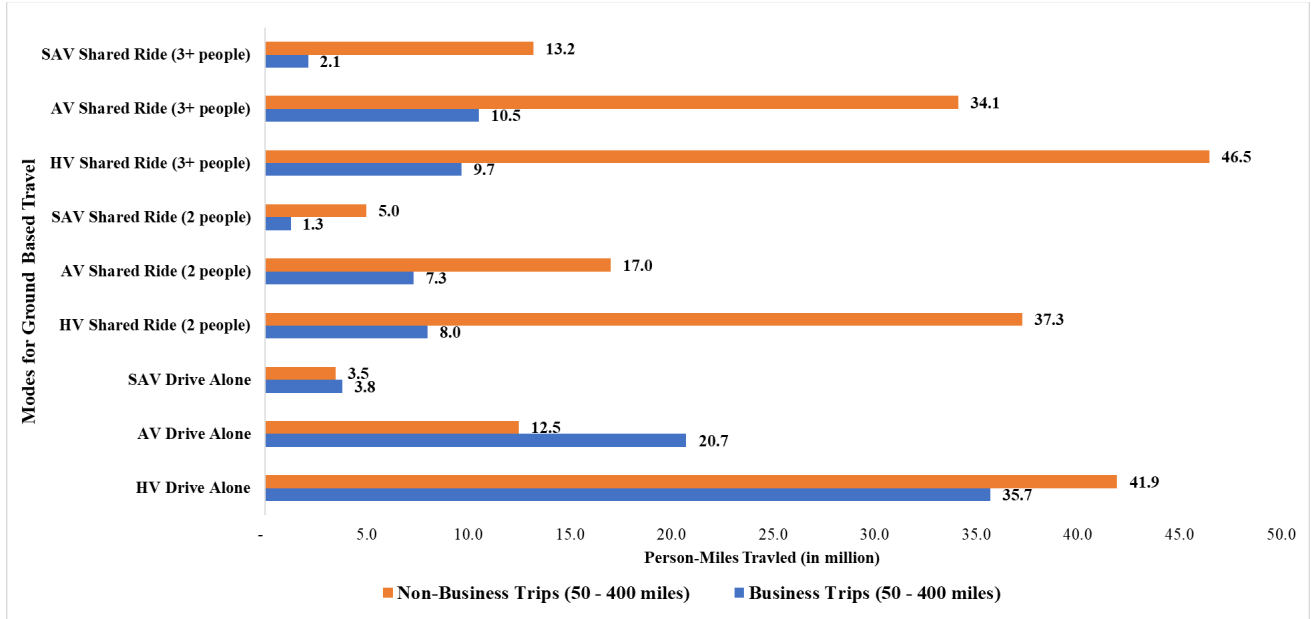
11 AV use for non-business individual travel resulted in 0.36 PMT per capita, accounting for 6% of  
 12 total PMT, while HVs comprised 20%. AVs constituted 8% of the total PMT for trips with two  
 13 passengers, while HVs represented 18%. Trips with three or more passengers saw AVs covering  
 14 16% of the PMT, lower than HVs at 22%. In shared rides, high-occupancy HVs performed better  
 15 than AVs and single-occupancy shared autonomous vehicles (SAVs). HVs with multiple  
 16 passengers covered 37.25 million person-miles, or 18% of total PMT, which is significantly higher  
 17 than the 8% for AVs and 2% for SAVs. Traditional vehicles remain the favored option for leisure  
 18 travel, with a 3+ party size covering 1.2 PMT per capita. Prior to the implementation of AVs,  
 19 HTrucks were the leading competitor in the freight market, accounting for 1326.9 billion freight  
 20 ton-miles (Figure 11). Rail transport was extensively employed, with 827.7 billion ton-miles  
 21 recorded. Water and Intermodal (IMX) transport accounted for 108.19 and 263.51 billion ton-  
 22 miles, respectively. Despite its high speed, air transport was used sparingly due to its high  
 23 expenses, as seen by its modest ton-miles of 5.24 billion. This mode of transportation is suitable  
 24 mainly for valued or time-sensitive shipments.

25 ATrucks do not require a driver, so they are not constrained by fixed schedules related to drivers'  
 26 availability. Thus, results show an overall 15% rise in ton-miles transported after their  
 27 introduction. Additionally, freight distribution saw significant shifts: traditional trucking, air  
 28 freight, rail, and water transport experienced reductions of 65%, 25%, and 17% in ton-miles,  
 29 respectively, compared to the period before the introduction of ATrucks. Meanwhile, ATrucks  
 30 accounted for 35% of the total ton-miles following their deployment.

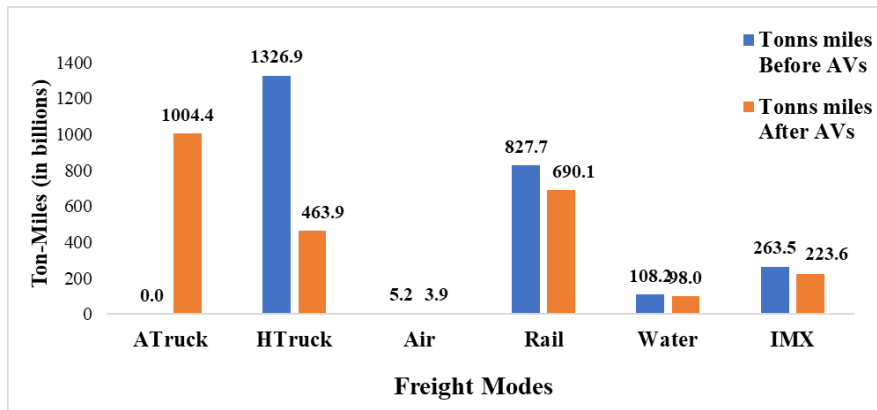


31  
32

33 Figure 8. Percentage Change in Average Trip Length Across Trip Types (a) and Vehicle Types  
 34 (b)  
 35



1  
2 Figure 10. Person-miles Travelled for Trips Exceeding 50 miles: No-AV vs AV Base Scenario



3  
4 Figure 11. Ton miles Moved across Commodities: No-AV vs AV Scenario

5 VMT experienced a notable rise across all time periods, as shown in Figure 12. During the AM  
6 and PM periods, VMT rose by more than 28%, followed by a 22% rise during the afternoon.  
7 Passenger VMT saw a 26% rise, while truck VMT rose 7%. This upward trend in VMT due to  
8 ATrucks is expected to increase further as they become more cost-effective than HTrucks.  
9 Expressways and freeways witnessed a significant rise of over 20% in passenger VMT, as shown  
10 in Figure 13. Furthermore, the rise in the number of hours vehicles spent on all types of roads  
11 (Figure 14) also indicates decreases in average speeds. Arterial roads, collector roads, and  
12 interstate highways were significantly impacted, with average speeds decreasing by more than  
13 60%, as shown in Figure 15. The results suggest that there is increased traffic congestion in AV  
14 scenarios. The most significant reductions in speed are observed during morning and evening  
15 hours, followed by afternoons, and then nights.

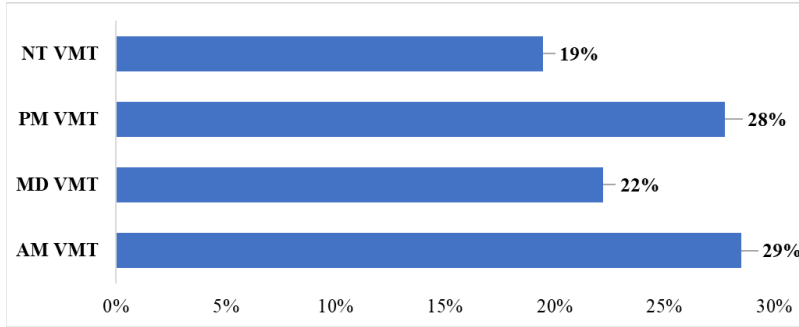


Figure 12. Percentage Change in VMT for Trips Exceeding 50 Miles: No-AV vs AV Base Scenario

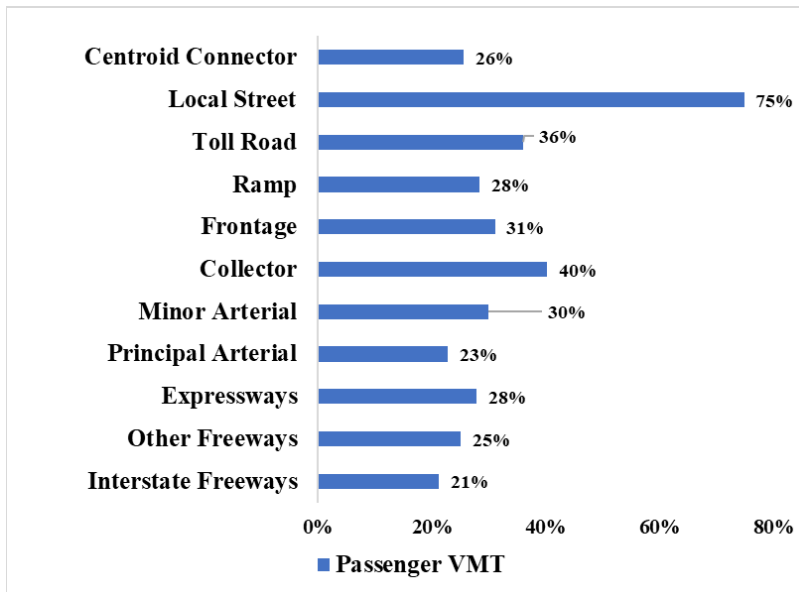


Figure 13. Percentage Change in Passenger VMT across Road Types: No-AV vs AV Base Scenario

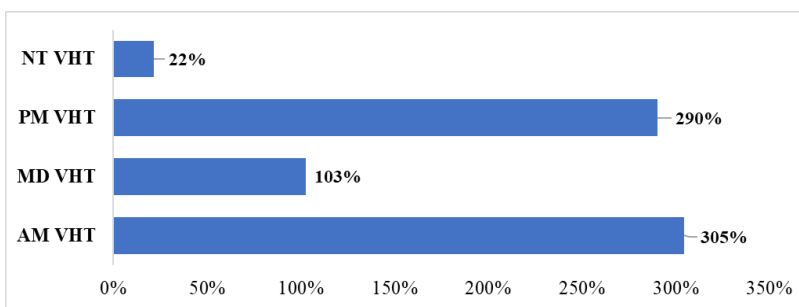


Figure 14. Percentage Change in VHT for Trips Exceeding 50 Miles: No-AV vs AV Base Scenario

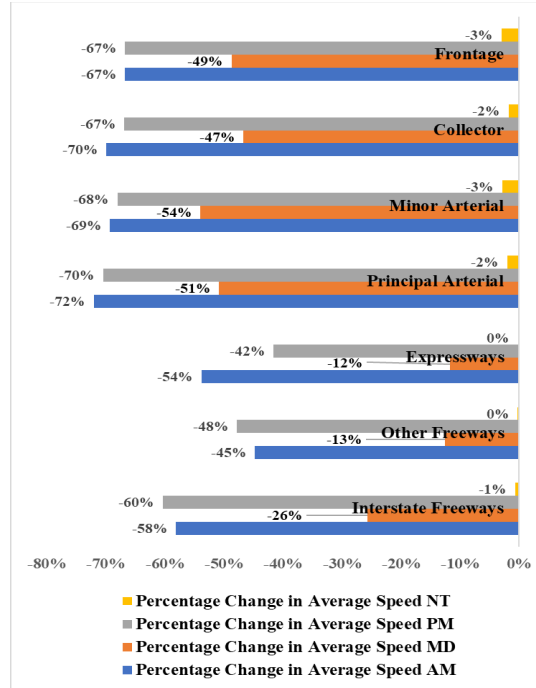


Figure 15 Percentage Change in Average Speed Across Road Types: No-AV vs AV Scenario

### CONCLUSIONS

This study extends TxDOT’s SAM model via its mode choice options to predict the travel and traffic impacts of AVs, SAVs, and ATrucks on passenger and freight flows across Texas and beyond. For passenger trips over 50 miles (one-way), SAM’s logit model was modified to include AVs and SAVs. The “No AV/ATruck Scenario,” has TxDOT’s default SAM settings, while the second model allows for AV, SAV, and ATruck modes. The “No AV/ATruck Scenario” model serves as a benchmark against AV/ATruck scenarios, allowing for a comprehensive analysis of the changes and benefits of introducing these advanced transportation technologies. For both models, SAM's weekday module selected a typical weekday as the basis for the analysis. For trips that are shorter than 50 miles, the mode split stays the same. However, for trips that are longer than 50 miles, the nested logit model was modified to include AVs, SAVs, and ATrucks.

AV simulation revealed that AVs and SAVs (personal) captured 14% of the market share, accompanied by a 17 percentage-point decline in human-driven "drive alone" mode for trips over 50 miles. This shift can be attributed to a 25% reduction in Vehicle VOTT, allowing individuals to use their time more effectively. The ability to use time effectively in AVs has encouraged travelers to opt for more distant locations, resulting in an 18% rise in average trip length (from 121 miles to 142 miles) for infrequent long-distance business trips and a 13% rise (135 miles to 151 miles) for non-business trips within 50 to 400 miles. For business-related travels, PMT for driving alone and two-passenger shared rides increased by 7.6% and 12.2%, respectively, with a significant 49% rise in three-passenger shared rides. AVs and SAVs show lower adoption rates for leisure trips, with HVs dominating larger group travels and significantly leading in PMT, indicating a strong preference for conventional vehicles in recreational contexts.

1 In the freight sector, ATrucks were the preferred mode, handling 35% of freight ton-miles,  
2 surpassing rail at 24% and human-driven trucks at 16% (vs. 52% and 33% via HTrucks and rail,  
3 respectively, before the inclusion of ATrucks). Average trip length rose across all vehicle  
4 categories, with light, medium, and heavy-duty trucks experiencing a rise of 35%, 32%, and 28%  
5 in their mean trip distances traveled. This trend indicates an inclination to cover greater distances,  
6 likely due to removing driving burdens in AV modes. Without travel demand management (like  
7 credit-based congestion pricing), congestion issues will grow, thanks to an average VMT rise of  
8 25.6% (from 1.09 to 1.37 billion miles per day). Of course, about 14% of this VMT rise is due to  
9 our starting assumption that AVs enable 15% more trip generation by passengers (for all trip  
10 purposes by all household types). The other 11% results from more driving, longer trips, less  
11 flying, and a shift to ATrucks. The AV inclusion influenced PMT distribution across modes for  
12 business and non-business trips.

13 Due to much higher VMT loads on the Texas network (as encoded in SAM, about 80% of  
14 centerline miles in the State of Texas), travel speeds are estimated to fall by about 36.9% on  
15 average (for the coded network). The VHT jumped by about 304%, largely due to passenger travel  
16 favoring the AM and PM peaks and mid-day. Speeds during night-time remained steady. Although  
17 AVs are gaining acceptance for business travel, HVs remain the preferred option for business and  
18 leisure purposes, especially for shared rides. This study's limitation is the scope of the  
19 modifications made for the AV scenario; integrating AVs, SAVs, and ATrucks was restricted to  
20 the mode choice step.

21 While these changes can predict shifts in trip distribution, mode splits, and trip assignments with  
22 feedback loops, they cannot predict the change in trip production. For a more realistic model, the  
23 enhancement of the trip generation step is required and will be the next step in future work planned.  
24 Due to their long run times, these models do not include full feedback loops from traffic  
25 assignment to trip distribution. This omission limits the ability to produce realistic travel times,  
26 which may affect the accuracy of the results. Another limitation comes from fixed mode share  
27 splits for short-distance trips. While SAM is primarily designed for large-scale studies and is not  
28 intended to replace urban models for city-level analyses, the reliance on fixed shares affects the  
29 ability to fully assess the impacts of AVs.

## 30 **ACKNOWLEDGMENTS**

31 This study is funded by TxDOT under project 5-7081-01. The authors appreciate supporters within  
32 TxDOT, including project manager Martin Dassi and project members Geena Maskey, James  
33 Kuhr, Ryan Granger, Ash Duong, and Sondra Johnson. They also thank Aditi Bhaskar and Clair  
34 LaVaye for their assistance with proofreading and review work.

## 35 **AUTHOR CONTRIBUTION**

36 The authors confirm their contributions to the paper as follows: conceptualization and  
37 methodology: Vellimana, M., and Kockelman, K.M.; data collection: Kockelman, K.M.; formal  
38 analysis and investigation: Paithankar, P., and Kockelman, K.M., Y.; writing—original draft:  
39 Paithankar, P., and Kockelman; All authors reviewed the results and approved the final version of  
40 the manuscript.



## REFERENCES

- Ashkrof, P., Homem de Almeida Correia, G., Cats, O. and van Arem, B., 2019. Impact of automated vehicles on travel mode preference for different trip purposes and distances. *Transportation Research Record*, 2673(5), pp.607-616.
- Bansal, P., Kockelman, K.M. and Singh, A., 2016. Assessing public opinions of and interest in new vehicle technologies: An Austin perspective. *Transportation Research Part C: Emerging Technologies*, 67, pp.1-14.
- Engholm, A., Pernestål, A. and Kristoffersson, I., 2020. Cost analysis of driverless truck operations. *Transportation research record*, 2674(9), pp.511-524.
- Fagnant, D.J. and Kockelman, K., 2015. Preparing a nation for autonomous vehicles: opportunities, barriers and policy recommendations. *Transportation Research Part A: Policy and Practice*, 77, pp.167-181.
- Fonzone, A., Fountas, G. and Downey, L., 2024. Automated bus services–To whom are they appealing in their early stages? *Travel Behaviour and Society*, 34, p.100647.
- Gurumurthy, K.M. and Kockelman, K.M., 2018. Analyzing the dynamic ride-sharing potential for shared autonomous vehicle fleets using cellphone data from Orlando, Florida. *Computers, Environment and Urban Systems*, 71, pp.177-185.
- Haboucha, C.J., Ishaq, R. and Shiftan, Y., 2017. User preferences regarding autonomous vehicles. *Transportation research part C: emerging technologies*, 78, pp.37-49.
- Hamadneh, J., Hamdan, N. and Mahdi, A., 2024. Users' Transport Mode Choices in the Autonomous Vehicle Age in Urban Areas. *Journal of Transportation Engineering, Part A: Systems*, 150(1), p.04023128.
- Harper, C.D., Hendrickson, C.T., Mangones, S. and Samaras, C., 2016. Estimating potential increases in travel with autonomous vehicles for the non-driving, elderly and people with travel-restrictive medical conditions. *Transportation research part C: emerging technologies*, 72, pp.1-9.
- Huang, Y. and Qian, L., 2021. Understanding the potential adoption of autonomous vehicles in China: The perspective of behavioral reasoning theory. *Psychology & Marketing*, 38(4), pp.669-690.
- Huang, Y., Kockelman, K.M. and Quarles, N., 2020. How will self-driving vehicles affect US megaregion traffic? The case of the Texas triangle. *Research in Transportation Economics*, 84, p.101003.
- LaMondia, J.J., Fagnant, D.J., Qu, H., Barrett, J. and Kockelman, K., 2016. Shifts in long-distance travel mode due to automated vehicles: Statewide mode-shift simulation experiment and travel survey analysis. *Transportation Research Record*, 2566(1), pp.1-11.

- Lee, S., Cho, K., Park, H. and Cho, D., 2023. Cost-Effectiveness of Introducing Autonomous Trucks: From the Perspective of the Total Cost of Operation in Logistics. *Applied Sciences*, 13(18), p.10467.
- Litman, Todd. 2018. *Autonomous Vehicle Implementation Predictions: Implications for Transport Planning*. Victoria Transport Policy Institute. Retrieved from: <https://www.vtppi.org/avip.pdf>.
- Maleki, M., Chan, Y. and Arani, M., 2021. Impact of autonomous vehicle technology on long distance travel behavior. arXiv preprint arXiv:2101.06097.
- Mamdoohi, A.R., Fallahpour, M.R., Abbasi, M. and Tari, M.Z., 2023. Private car ownership in presence of shared autonomous vehicles, case of Tehran. *Transactions on transport sciences*, 14(3), pp.54-60.
- Perrine, K.A., Kockelman, K.M. and Huang, Y., 2020. Anticipating long-distance travel shifts due to self-driving vehicles. *Journal of Transport Geography*, 82, p.102547.
- Truong, L.T., De Gruyter, C., Currie, G. and Delbosc, A., 2017. Estimating the trip generation impacts of autonomous vehicles on car travel in Victoria, Australia. *Transportation*, 44, pp.1279-1292.
- Xu, M., Di, Y., Zhu, Z., Yang, H. and Chen, X., 2024. Design and analysis of ride-sourcing services with auxiliary autonomous vehicles for transportation hubs in multi-modal transportation systems. *Transportmetrica B: Transport Dynamics*, 12(1), p.2333869.
- Zhao, Y. and Kockelman, K.M., 2018. Anticipating the regional impacts of connected and automated vehicle travel in Austin, Texas. *Journal of Urban Planning and Development*, 144(4), p.04018032.